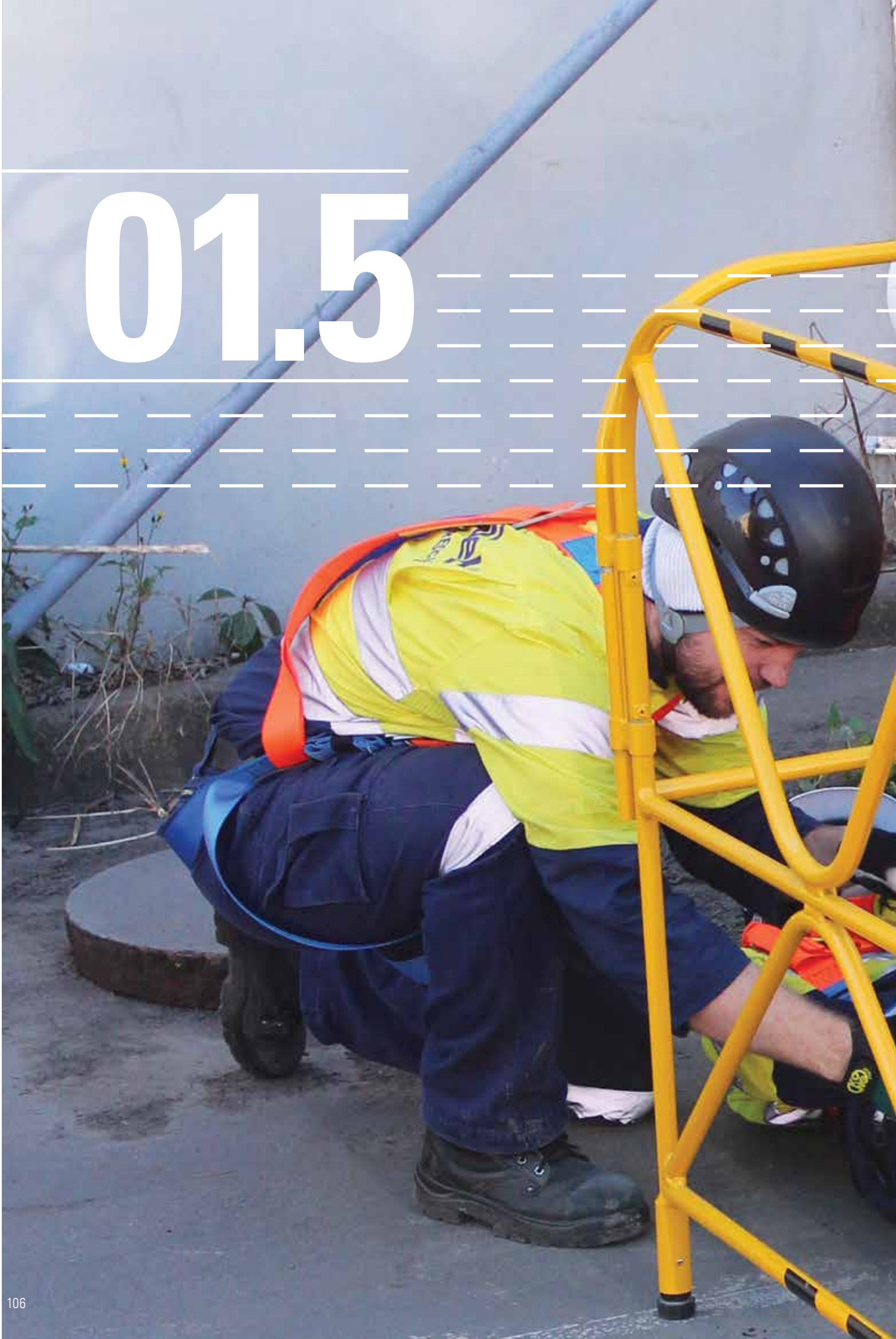


01.5



Confined Space Solutions

Davit Systems	105
SpanSet Xtirpa Portable Manhole Guard System	108
SpanSet Xtirpa Tow Bar Hitch Davit System	110
SpanSet Xtirpa 1200mm Tow Bar Hitch Davit System	114
SpanSet Xtirpa H-Base Portable Davit System	116
SRL and Winch Bracket Adapters	117
SpanSet Xtirpa 600mm (24") Fixed Davit System	118
SpanSet Xtirpa 1200mm (48") Fixed Davit System	120
SpanSet Xtirpa 2400mm (96") Fixed Davit System	122
SpanSet Xtirpa Counterweight Systems	124
SpanSet Xtirpa Low Clearance Integrated Mast and Davit Arm	126
SpanSet Xtirpa Short Reach Mast and Davit Arm	126
Manhole Cover Lifter Set	127
Heavy Duty Tripod	128
Personnel Winches	130
Combination Inertia Reel and Winches	131
4000 Pulley System	132
Confined Space Accessories	133

01.5 CONFINED SPACE SOLUTIONS

Davit Systems

Heavy Duty Tripod
Personnel Winches
Combination Inertia Reel and Winches
4000 Pulley System
Confined Space Accessories



SpanSet Xtirpa Portable Manhole Guard System

These portable manhole guards have an integrated mast, which in conjunction with the davit arm, transform these into confined space fall protection and retrieval systems. Ultra lightweight and portable with a rating in excess of 16kN, the assembly can be set up in less than 60 seconds.

Our Xtirpa manhole guard systems tick all the boxes of public safety, secondary fall protection, primary fall protection, rescue and retrieval, controlled ingress and egress, manual handling and worker acceptance. They are fully expandable with the extension pieces to suit any size application and are far more stable than a tripod.

Manhole Barrier Kit

with davit arm and stabilizer

Code: SPXT3 Xtirpa



Spiked Manhole Guard Feet

Large Rubber Feet for Manhole Guard

SPXTA2101-07 Manhole Guard Extension



SPXT2 Portable Manhole Guard Davit System (SPXT3 with Stabiliser)

01.5 CONFINED SPACE SOLUTIONS

Davit Systems

- Heavy Duty Tripod
- Personnel Winches
- Combination Inertia Reel and Winches
- 4000 Pulley System
- Confined Space Accessories



SpanSet Xtirpa Portable Manhole Guard System

Portable Manhole Guard

Code: SPXTIN2108

Large Manhole Guard

Code: SPXTIN2324

Davit Arm

Code: SPXTIN2210

Stabiliser

Code: SPXTA2108-18

Manhole Guard Extension

Code: SPXTA2101-07

Repositioning Wheels

Code: SPXTIN52

SPXTIN52 Repositioning Wheels

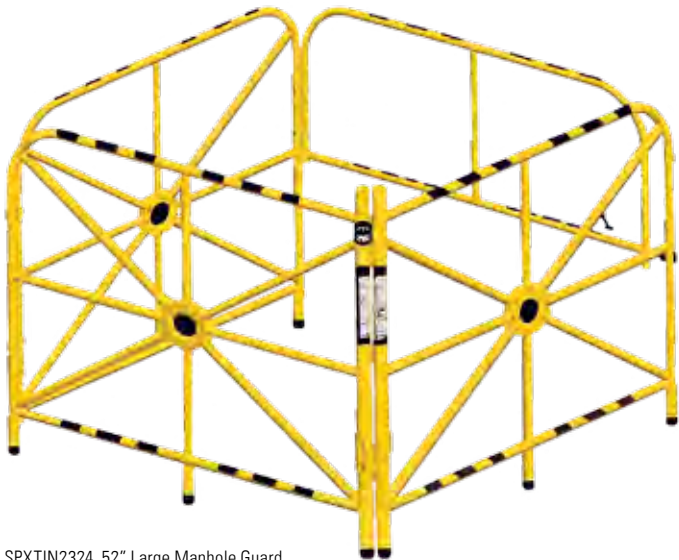
SPXTIN2108 Portable Manhole Guard



SPXTA2108-18 Stabiliser



SPXTIN2324 52" Large Manhole Guard



SPXTIN2210 Davit Arm



01.5 CONFINED SPACE SOLUTIONS

Davit Systems

Heavy Duty Tripod
Personnel Winches
Combination Inertia Reel and Winches
4000 Pulley System
Confined Space Accessories



SpanSet Xtirpa Tow Bar Hitch Davit System

For Fall Protection and Retrieval Versatility

The trailer hitch mount system connects to most 50mm square vehicle receiver hitches. This most popular system offers you adjustable screw pads for simple leveling of the system and is far more stable than a tripod.

Again SpanSet is offering you the most versatile system on the market, always using same mast (SPXTIN2003) and same davit arm (SPXTIN2210). It gives you a maximum rating of 16kN and features a range of accessories to complete this valuable workplace asset.

Xtirpa Tow Bar Hitch Mount System Kit

with mast and davit arm

Code: SPXT6

Trailer Hitch Mount

CODE: SPXTIN2126

Xtirpa Davit Arm 16kN

CODE: SPXTIN2210

Mast for 2210

CODE: SPXTIN2003

Hitch Mount With Wide Stabiliser

CODE: SPXTIN2204



01.5 CONFINED SPACE SOLUTIONS

Davit Systems

- Heavy Duty Tripod
- Personnel Winches
- Combination Inertia Reel and Winches
- 4000 Pulley System
- Confined Space Accessories



SpanSet Xtirpa Tow Bar Hitch Davit System

SPXTIN2210 Davit Arm



SPXTIN2204 76mm Hitch Mount with 1524mm Stabiliser



SPXTIN2126 Trailer Hitch Mount



01.5 CONFINED SPACE SOLUTIONS

Davit Systems

Heavy Duty Tripod
Personnel Winches
Combination Inertia Reel and Winches
4000 Pulley System
Confined Space Accessories



SpanSet Xtirpa Tow Bar Hitch Davit System Accessories

Anchor Bolt Adapter

for Trailer Hitch Mount
CODE: SPXTA2126-21

90° Extension

for Trailer Hitch Mount
Code: SPXTIN2126-10

Straight Extension

for Trailer Hitch Mount
Code: SPXTA2126-09

406mm C Clamp Adapter

for Trailer Hitch Mount
Code: SPXTIN2126-14

597mm C Clamp Adapter

for Trailer Hitch Mount
Code: SPXTIN2126-33

SPXTA2126-10 90 Degree Extension



SPXTA2126-09 Straight Extension



SPXTA2126-21 Anchor Bolt Adapter



SPXTA2126-14 406mm C Clamp Adapter



SPXTA2126-33 597mm C Clamp Adapter



01.5 CONFINED SPACE SOLUTIONS

Davit Systems

- Heavy Duty Tripod
- Personnel Winches
- Combination Inertia Reel and Winches
- 4000 Pulley System
- Confined Space Accessories



SpanSet Xtirpa Tow Bar Hitch Davit System Accessories

Universal Swivel Joint

for Trailer Hitch Mount
Code: SPXTA2126-07

Short Mezzanine C Clamp Adapter

for Trailer Hitch Mount
Code: SPXTA2126-50

213mm Universal Wall Adapter Extension

for Trailer Hitch Mount
Code: SPXTA2348-03

415mm Universal Wall Adapter Extension

for Trailer Hitch Mount
Code: SPXTA2348-05

Wall Adapter for Universal Wall Adapter Extensions

for Trailer Hitch Mount
Code: SPXTA2348-07

Mounting Plate For Universal Wall Adapter

for Trailer Hitch Mount
Code: SPXTA2348-08 (for use with SPXTIN2348)

SPXTIN2348-08



SPXTA2126-07 Universal Swivel Joint



SPXTA2126-50 Short Mezzanine C Clamp Adapter



SPXTA2348-05 415mm Universal Wall Adapter Extension



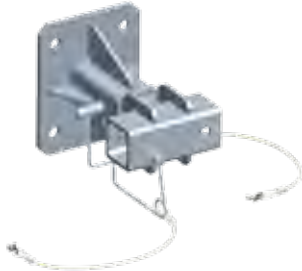
SPXTA2348-07 Wall Adapter for SPXTIN2348-03 and SPXTIN2348-05



SPXTA2348-03 213mm Universal Wall Adapter Extension



SPXTIN2348 Universal Wall Adapter for Hitch Mount (Zinc)



01.5 CONFINED SPACE SOLUTIONS

Davit Systems

Heavy Duty Tripod
Personnel Winches
Combination Inertia Reel and Winches
4000 Pulley System
Confined Space Accessories



SpanSet Xtirpa 1200mm Tow Bar Hitch Davit System





Davit Systems

Heavy Duty Tripod
 Personnel Winches
 Combination Inertia Reel and Winches
 4000 Pulley System
 Confined Space Accessories

SPXTIN2305 Universal T-Base

Working Load Mass with Mast SPXTIN2240 and Davit Arm SPXTIN2237	164kg
Maximum Capacity with Mast SPXTIN2240 and Davit Arm SPXTIN2237	16kN
Hitch Vehicle Minimum Weight	2727kg
Weight	33kg
Extensions	Aluminium
Mast Sleeve	Aluminium
Extension Sliders	Black Delrin
Positioning Levels and Hardware	Zinc Plated Steel
Positioning Pads	Aluminium
Finish	Security Yellow

SPXTIN2240 Mast

Maximum Working Load with Davit Arm SPXTIN2237	164kg
Maximum Capacity with Davit Arm SPXTIN2237	16kN
Weight	11kg
Mast	Aluminium
Handle	Aluminium
Finish	Security Yellow

SPXTIN2237 1200mm Davit Arm

Maximum Working Load with Mast SPXTIN2240	164kg
Maximum Capacity with Mast SPXTIN2240	16kN
Maximum Capacity at Anchor Point	22kN
Weight	16kg
Extension and Guide Tubes	Aluminium
Anchorage Hooks	Stainless Steel
Hardware	Zinc Plated Stainless Steel
Guide Tube Sliders	Ultra High Molecular-weight Polyethylene
Pulley	Black Acetal
Finish	Security Yellow

SpanSet Xtirpa 1200mm Tow Bar Hitch Davit System

SPXTIN2305 Universal T-Base Mount



SPXTIN2240 Davit Mast



01.5 CONFINED SPACE SOLUTIONS

Davit Systems

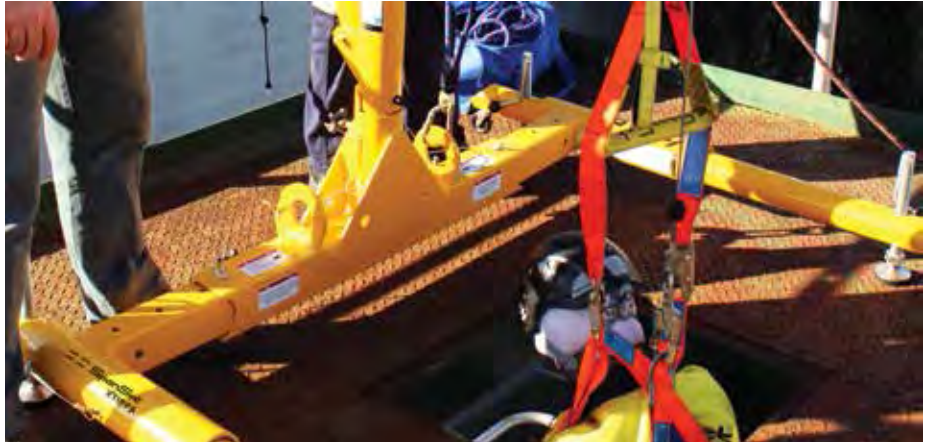
Heavy Duty Tripod

Personnel Winches

Combination Inertia Reel and Winches

4000 Pulley System

Confined Space Accessories



SpanSet Xtirpa H-Base Portable Davit System

The 5 piece hoist system is designed to be used in conjunction with davit arm SPXTIN2210 and mast SPXTIN2003. The portable lower base will adjust to fit most standard confined spaces. It offers a solution for the entry, rescue and positioning of personnel.

The davit arm/mast combination will allow the attendant to pivot the system for easier and safer rescue and offers far more stability than a tripod. Durable and versatile, the system has a capacity of 16kN and it also provides you a 22kN anchor point for standby personnel.

Xtirpa H-Base Portable Davit System Kit

with mast and davit arm

Code: SPXT5

H-Base

Code: SPXTIN2118

50" Xtirpa Davit Arm 16kN

Code: SPXTIN2210

Mast for 2210

Code: SPXTIN2003



SPXTIN2210 50" Davit Arm



SPXTIN2118 H-Base



SPXTIN2003 Mast for SPXTIN2210



01.5 CONFINED SPACE SOLUTIONS



Davit Systems

Heavy Duty Tripod
 Personnel Winches
 Combination Inertia Reel and Winches
 4000 Pulley System
 Confined Space Accessories

SRL and Winch Bracket Adapters

For those customers who own existing competitors' winches and SRLs we have adapter brackets available to fit the Xtirpa range of davits and our tripods.

Note: All SRL and Winch brackets supplied by SpanSet are compatible with the Xtirpa range without the need for adapters.

SPXTIN2225



SPXTIN2226

Brand and Model	Part No
SpanSet SVLRB15	SVLRB15 Bracket
SpanSet SVLRB-30	SVLRB30 Bracket
SpanSet SVLRB-40	SVLRB40 Bracket
SpanSet SVLWB-20	Winch Adapt Bracket
SpanSet SVLWB-30	Winch Adapt Bracket
SpanSet Heavy Duty Tripod	TRIPOD-HD
Protecta SRL AD515CG	SPXTIN2152 Adapter
Miller SRL MR-100G, MR130SB	SPXTIN2177 Adapter
Miller SRL M52/25	SPXTIN2225 Adapter
Miller SRL LB287	SPXTIN2226 Adapter
Miller Man Handler Winch	SPXTIN2191 Adapter
Ikar SRL 205G-50	SPXTIN2079 Adapter
Ikar SRL 205G-75	SPXTIN2178 Adapter
Ikar SRL 205G-100	SPXTIN2231 Adapter
Sala SRL and Winch	-
MSA Winch 10011744,50	SPXTIN2151 Adapter
North FP6610/33 (purchased prior to 2012)	SPXTIN2215 Adapter
North FP6610/15 (purchased prior to 2012)	SPXTIN2191 Adapter

01.5 CONFINED SPACE SOLUTIONS

Davit Systems

Heavy Duty Tripod
 Personnel Winches
 Combination Inertia Reel and Winches
 4000 Pulley System
 Confined Space Accessories



SpanSet Xtirpa 600mm (24") Fixed Davit System

This unique, adjustable davit system was developed to allow workers greater versatility, with the mast adapter permanently fixed to a structure and the davit arm and mast moved around as required. Ensuring easy and safe access into a wide variety of confined spaces this davit is easily positioned from 380mm,

450mm and 600mm. The davit's versatility offers a solution where other conventional systems are impractical.

With a safety factor of 10:1 the davit meets or exceeds CSA, ANSI, OSHA, CSST and CE Standards.

Code	Description	Min Reach	Max Reach	Max Height
SPXT24	600mm Davit, Mast and Base kit	385mm	601mm	2992mm
SPXTIN2210	600mm Davit Arm	-	-	-
SPXTIN2003	Standard Mast	-	-	-
SPXTIN2044	380mm Mast Extension	-	-	3372mm
SPXTIN2109	450mm Mast Extension	-	-	3442mm
SPXTIN2045	600mm Mast Extension	-	-	3592mm
SPXTIN2005	Stainless Steel Floor Adapter	-	-	-



SPXTIN2044 380mm
 Mast Extension



SPXTIN2109 350mm
 Mast Extension



SPXTIN2045 600mm
 Mast Extension

Davit Systems

- Heavy Duty Tripod
- Personnel Winches
- Combination Inertia Reel and Winches
- 4000 Pulley System
- Confined Space Accessories



**SpanSet Xtirpa 600mm (24")
Fixed Davit System**



SPXTIN2005 Floor Adapter Base



SPXTIN2006 Flush Floor Adapter Base



SPXTIN2007 Concrete Top Wall Bracket



SPXTIN2013 Mural Wall Mount Adapter Base



SPXTIN2124 8 Inch Clearance Mural Wall Adapter



SPXTIN2097 Sleeve Adapter



SPXTIN2021 Wall Adapter Base



SPXTIN2008 Adjustable Wall Adapter



SPXTIN2131 Exterior Corner Wall Mount Sleeve



SPXTIN2133 Inside Corner Wall Mount Sleeve



SPXTIN2105 Central Floor Adapter Base



SPXTIN2087 Wall Mounted Universal Ring Adapter



SPXTIN2085 H-Beam Adapter



SPXTIN2208 Sliding Beam Adapter



SPXTIN2171 Transformer Adapter



SPXTIN2117 Concrete Top Wall Bracket



SPXTIN2161 Warning Post



SPXTIN2072 Adapter Cap



SPXTP2006-6 Adapter Reinforcement Plate



SPXTP2174 Adapter Plate 12 Inch Rod Kit

01.5 CONFINED SPACE SOLUTIONS

Davit Systems

Heavy Duty Tripod
 Personnel Winches
 Combination Inertia Reel and Winches
 4000 Pulley System
 Confined Space Accessories



SpanSet Xtirpa 1200mm (48") Fixed Davit System

This unique, adjustable davit system was developed to allow workers greater versatility, with the mast adapter permanently fixed to a structure and the davit arm and mast moved around as required.

Ensuring easy and safe access into a wide variety of confined spaces this davit is easily positioned from 775mm, 915mm and 1200mm. The davit's versatility offers a solution where other conventional systems are impractical.

With a safety factor of 10:1 the davit meets or exceeds CSA, ANSI, OSHA, CSST and CE Standards.



Code	Description	Min Reach	Max Reach	Max Height
SPXT48	1200mm Davit, Mast and Base Kit	774mm	1208mm	2224mm
SPXTIN2237	1200mm Davit Arm	-	-	-
SPXTIN2240	Mast	-	-	-
SPXTIN2238	Stainless Steel Floor Adapter	-	-	-

Davit Systems

- Heavy Duty Tripod
- Personnel Winches
- Combination Inertia Reel and Winches
- 4000 Pulley System
- Confined Space Accessories



1200mm (48") Fixed Davit Mast System Accessories



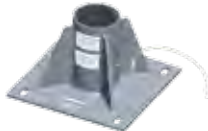
SPXTA2237-06 Removable Winch Adapter



SPXTIN2238 Floor Adapter Base



SPXTIN2253 Mural Wall Adapter Base



SPXTIN2254 Central Floor Adapter Base



SPXTIN2266 Flush Floor Adapter Base



SPXTIN2255 Mast Sleeve Adapter



SPXTIN2272 Adapter Cap 4 Inch Diameter



SPXTIN2273 Adapter Cap with Steel Wire, 4 Inch Diameter



SPXTA2238-03 Cylinder Reducer 4-3 Inches



SPXTIN2271 Rope Access Bracket

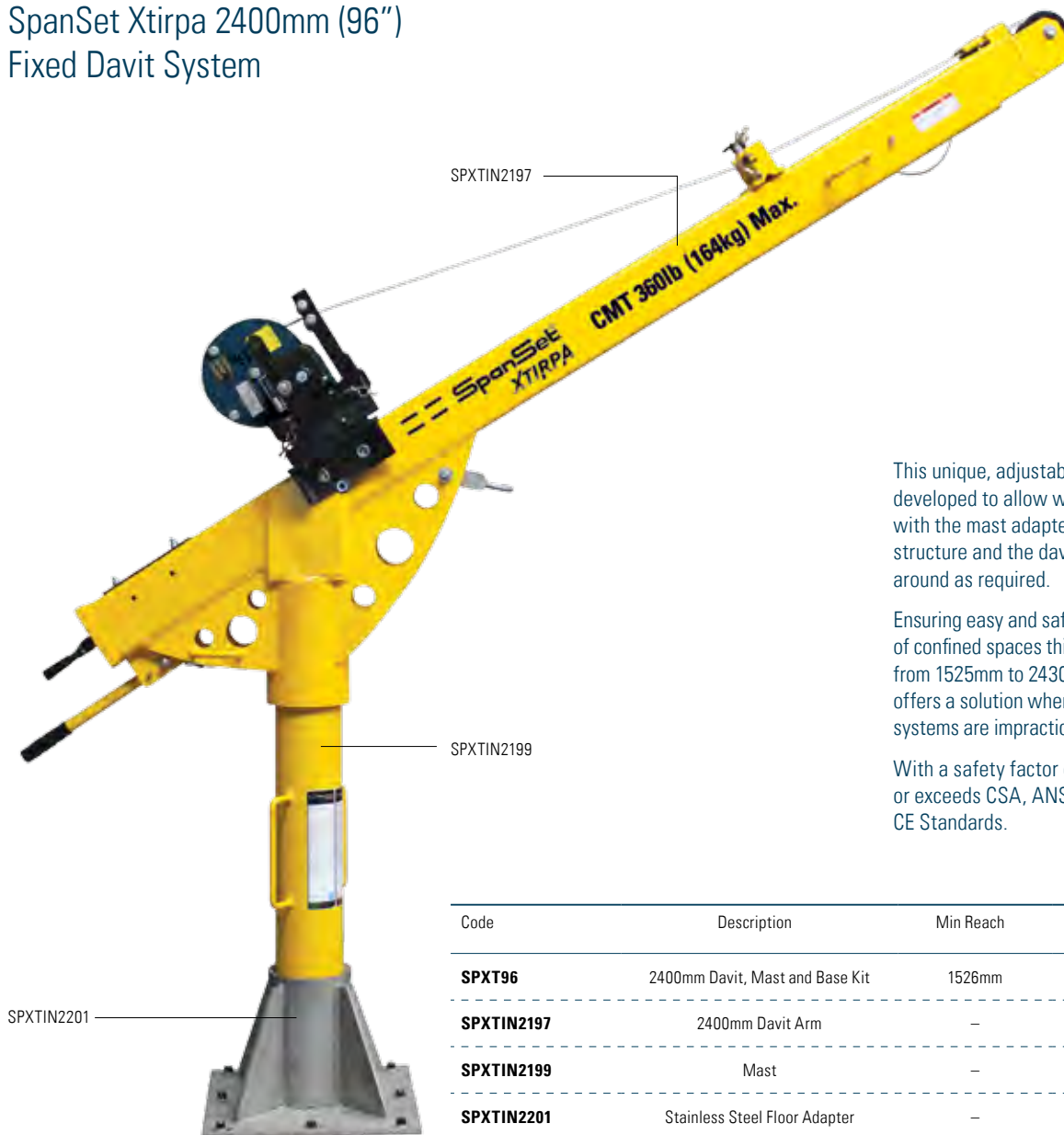
01.5 CONFINED SPACE SOLUTIONS

Davit Systems

Heavy Duty Tripod
 Personnel Winches
 Combination Inertia Reel and Winches
 4000 Pulley System
 Confined Space Accessories



SpanSet Xtirpa 2400mm (96") Fixed Davit System



This unique, adjustable davit system was developed to allow workers greater versatility, with the mast adapter permanently fixed to a structure and the davit arm and mast moved around as required.

Ensuring easy and safe access into a wide variety of confined spaces this davit is easily positioned from 1525mm to 2430mm. The davit's versatility offers a solution where other conventional systems are impractical.

With a safety factor of 10:1 the davit meets or exceeds CSA, ANSI, OSHA, CSST and CE Standards.

Code	Description	Min Reach	Max Reach	Max Height
SPXT96	2400mm Davit, Mast and Base Kit	1526mm	2428mm	2786mm
SPXTIN2197	2400mm Davit Arm	-	-	-
SPXTIN2199	Mast	-	-	-
SPXTIN2201	Stainless Steel Floor Adapter	-	-	-



Davit Systems

- Heavy Duty Tripod
- Personnel Winches
- Combination Inertia Reel and Winches
- 4000 Pulley System
- Confined Space Accessories

2400mm (96") Fixed Davit Mast System Accessories



SPXTIN2201 2400mm Floor Mount Adapter



SPXTP2201-004 Cylinder Reducer, 5.5-3 Inches



SPXTA2201-04 Cylinder Reducer, 5.5-4 Inches

01.5 CONFINED SPACE SOLUTIONS

Davit Systems

Heavy Duty Tripod
Personnel Winches
Combination Inertia Reel and Winches
4000 Pulley System
Confined Space Accessories



SpanSet Xtirpa Counterweight Systems

This counterweight system is designed for multiple confined space access in the same area where the extra reach of the 1200mm davit arm is required. Additionally, it can be used in areas where a fixed base is not possible.

The system consists of a central unit to which a number of optional equipment can be added, including extensions, leg adjustment and anchoring options.

With a weight capacity of 163kg this system can be used in conjunction with a counterbalancing weight rack or a wheel pad assembly when using a vehicle. The davit arm has a 2270kg anchor point.

SPXTA8012 Counterweight System



SPXTIN2240 Davit Mast for 1200mm Davit
1070mm Height

SPXTIN2313 Davit Mast for 1200mm Davit
1070mm Height

SPXTIN2237 Extendable Arm for 1200mm Davit

SPXTA2305-16 T-Base Mount
Extension 1830mm

SPXTA2237-06 Removable Adapter for Positioning Winch

01.5 CONFINED SPACE SOLUTIONS

Davit Systems

- Heavy Duty Tripod
- Personnel Winches
- Combination Inertia Reel and Winches
- 4000 Pulley System
- Confined Space Accessories



SpanSet Xtirpa Counterweight Systems

Required Components

SPXTIN2305 Universal T-Base Mount



SPXTA2305-27 Counterweight Base



SPXTP2305-16n 23kg Counterweight Weight Plates



SPXTA2305-23 Counterweight Base Extension Tube



Optional Accessories

SPXTA2305-25 Counterweight Adapter for 1830mm Extension



SPXTA2305 Water Counterweight



01.5 CONFINED SPACE SOLUTIONS

Davit Systems

Heavy Duty Tripod
Personnel Winches
Combination Inertia Reel and Winches
4000 Pulley System
Confined Space Accessories



SpanSet Xtirpa Low Clearance Integrated Mast and Davit Arm

This low clearance davit with an integrated mast and davit arm is designed for use in any of the 610mm (3 inch) adapter bases. Ideal for when a shorter clearance is required.

The unit weighs 7kg and has a weight capacity of 163kg, is 915mm in height and has a 460mm reach.



SPXTIN2295 Low Clearance Mast and Davit (base adapter for application use only).

SpanSet Xtirpa Short Reach Mast and Davit Arm

Low clearance integrated mast and davit arm for use in any of the 610mm (3 inch) adapter bases when a shorter clearance is needed.

The unit weighs 7kg, is 915mm high and has a 229mm reach.



SPXTIN2363 Short Reach Mast and Davit



Davit Systems

- Heavy Duty Tripod
- Personnel Winches
- Combination Inertia Reel and Winches
- 4000 Pulley System
- Confined Space Accessories

Manhole Collars

Manhole Collar

A smart and quick solution for fixed diameter manhole access and provision of rescue egress capability. Lightweight aluminium construction makes handling easy and the unit is also available in other sizes.

Code: SPXTIN2217 (diameter 605-655mm)

SPXTIN2217 Manhole Collar



Assembled Set

Manhole Cover Lifter Set

Manhole Cover Lifter

This unique concept was designed for easy handling of manhole covers. Light and durable, this model will offer an ergonomic and safe way of lifting the toughest lids without strain. The non-skid foot plate, auto rewind ratchet mechanism and 1335mm of leverage combine to minimise the potential for manual handling injuries.

Code: SPXTIN2071



SPXTIN2071 Manhole Cover Lifter

01.5 CONFINED SPACE SOLUTIONS

Davit Systems

Heavy Duty Tripod

Personnel Winches

Combination Inertia Reel and Winches

4000 Pulley System

Confined Space Accessories



Heavy Duty Tripod

This aluminium tripod has been designed for tough work conditions and long term use and is particularly suitable for the hire industry. Rectangular, fully adjustable legs and a one piece cast head are designed to resist damage. Integrated twin pulleys and an additional auxiliary anchorage point allow many options and combinations of access, egress and rescue equipment to be specified. Standard extended height is 2.7m.

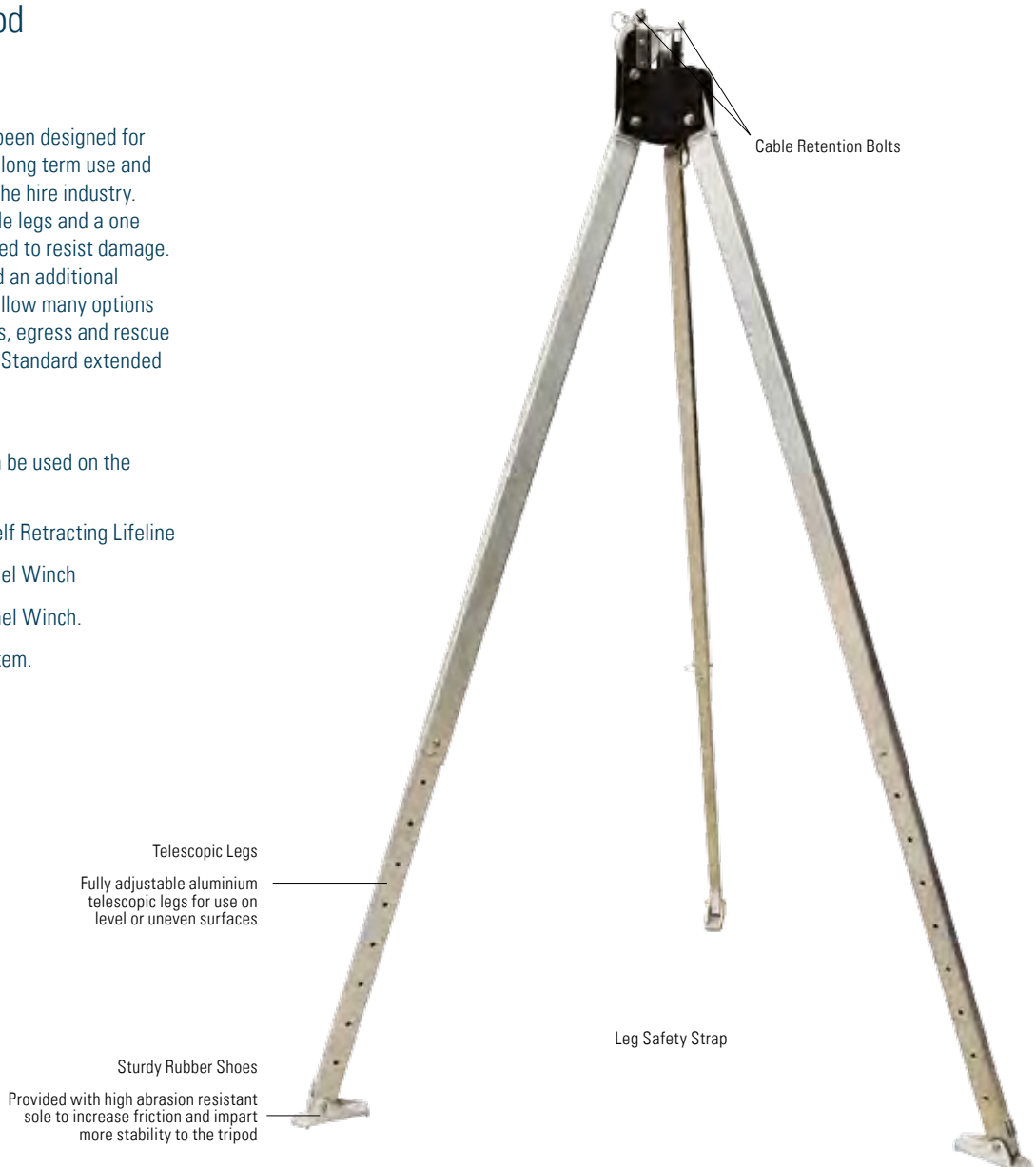
Code: TRIPOD-HD

The following products can be used on the Heavy Duty Tripod:

- SVLRB-15 15m 3 Way Self Retracting Lifeline
- SVLWB-20 20m Personnel Winch
- SVLWB-30 30m Personnel Winch.
- 4000 Rescue Pulley System.

Accessories

Tripod Bracket





Davit Systems

Heavy Duty Tripod

Personnel Winches

Combination Inertia Reel and Winches

4000 Pulley System

Confined Space Accessories

Heavy Duty Tripod

Dual pulleys allow for simultaneous operation of a winch and 3 way self-retracting lifeline.



Tripod Head

Robust aluminium alloy cast head with two integral pulleys for smooth winching/lowering operations.

Swivel Aluminium Eye Bolts

Tested to sustain a force of more than 15kN static force.

Heavy Duty Tripod

Working Load Limit	350kg
Weight	24kg
Standard Height	1.86m
Extended Height	2.7m
No. of Persons	2
Wheelbase (Footprint) Diameter	2.3m
Legs	Aluminium
Head Wheels	Stainless Steel
Hardware	Zinc Plated Steel
Head Finish	Black Powder Coated

Heavy Duty Tripod Bracket

Weight	2.38kg
Body Material	Steel
Finish	Black Powder Coated

01.5 CONFINED SPACE SOLUTIONS

Davit Systems

Heavy Duty Tripod

Personnel Winches

Combination Inertia Reel and Winches

4000 Pulley System

Confined Space Accessories



Personnel Winches

These robust personnel winches are perfectly suited to the demanding requirements of the confined space environment.

Tough, steel construction, combined with sensible features, allow operators to get on with the task at hand in total confidence.

Attention to detail, such as wire guide rollers and a spring loaded spool retention bar add to the workhorse nature of these winches.

SVLWB-20/SVLWB-30



Code	Description	Weight	Cable Material	Max/Min Work Load	Mechanical Advantage
SVLWB-20	20m personnel winch	14kg	Galvanised Steel	150kg/12kg	22:1
SVLWB-30	30m personnel winch	15.5kg	Galvanised Steel	150kg/12kg	22:1
SVLWB-45	30m personnel winch	18kg	Galvanised Steel	–	–
SVLWB-60	30m personnel winch	19.5kg	Galvanised Steel	–	–

01.5 CONFINED SPACE SOLUTIONS



Davit Systems
 Heavy Duty Tripod
 Personnel Winches
**Combination Inertia Reel
 and Winches**
 4000 Pulley System
 Confined Space Accessories

Combination Inertia Reel and Winches

These self retracting lifelines offer fall protection when entering or exiting confined spaces, and have the additional feature of an easy to deploy emergency winch function. Swivel fall indicator hooks are standard on all SpanSet 3 way devices.

SVLRB-15

SVLRB-30/SVLRB-40



Code	Description	Weight	Lifeline material	Max Load
SVLRB-15	15m 3 way SRL	10.4kg	Galvanised Steel	150kg
SRLRB-30	30m 3 way SRL	12.3kg	Galvanised Steel	136kg
SRLRB-40	40m 3 way SRL	13.1kg	Galvanised Steel	136kg

01.5 CONFINED SPACE SOLUTIONS

Davit Systems

Heavy Duty Tripod

Personnel Winches

4000 Pulley System

Confined Space Accessories



4000 Entry and Egress Pulley System

Our pulley system with a 4:1 mechanical advantage is simple to use and features one way pulleys ie: free wheeling to assist the hauling effort when raising, and locked, adding friction and resistance when lowering.

Safety is further enhanced with a locking, spring loaded, toothed cam. It can be self operated or by a second person. The kit comes complete with a fold out rescue organizer bag, anchor sling karabiners and an ascender/rope grab for even greater ergonomics.

CODE: 4000



01.5 CONFINED SPACE SOLUTIONS

Davit Systems
Heavy Duty Tripod
Personnel Winches
Combination Inertia Reel and Winches
Rescue Pulley Systems
Confined Space Accessories



Confined Space Accessories

VRS Rescue Stretcher

Soft sided rescue stretcher can be used for vertical or horizontal extraction. Tough plastic combined with the absence of webbing straps underneath mean that the unit can be easily slid over obstacles and terrain without damage or snagging. Comes complete with lifting bridles and all connection points are colour coded for ease of deployment. Rolls up into a small bag for stowage and transport.



4006 Spreader Bar

For connection to shoulder loops to give a true vertical orientation when extracting a victim through tight manhole situations. Comes with integrated wrist strap to reduce shoulder width.



FPV8020 Bosun's Chair

Full width bosun's chair for prolonged suspension. To be strictly used with a fall arrest system.



HD Tripod Bag

Heavy duty kit bag for ease of transport and storage.

