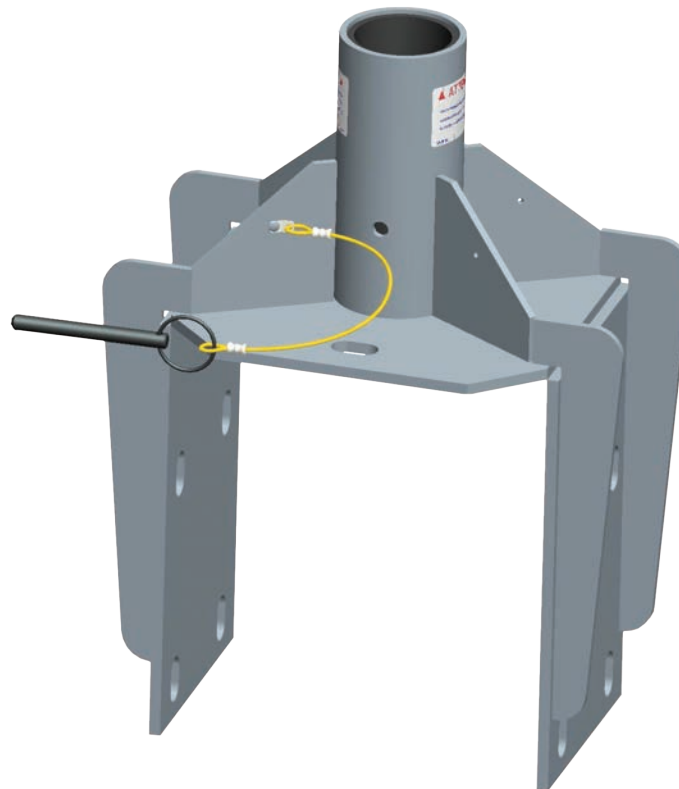


SPXTIN2205-01: Wall Fix Adapter 12"



SpanSet Australia Ltd

13 Pullman Place
Emu Plains
NSW 2750
Australia

Telephone

+61 2 4735 3955

Fax

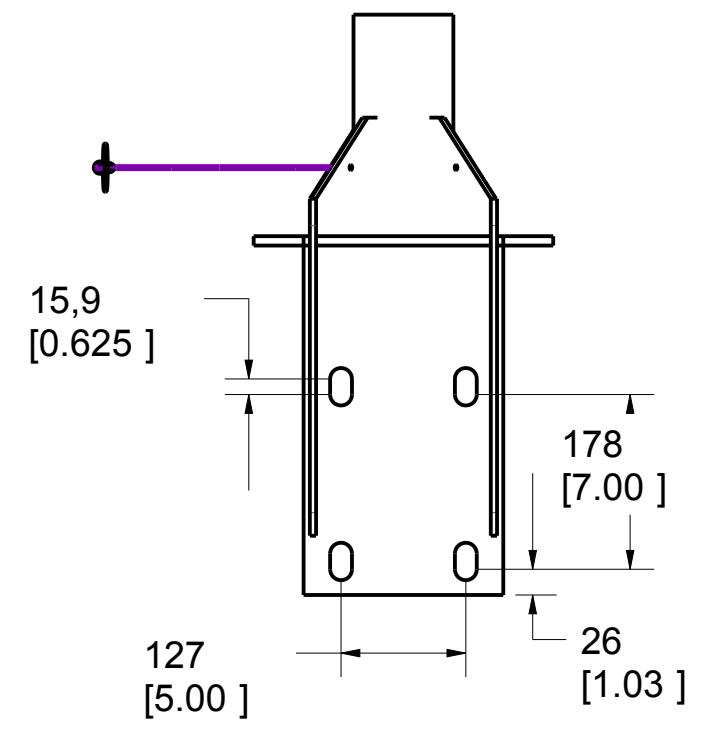
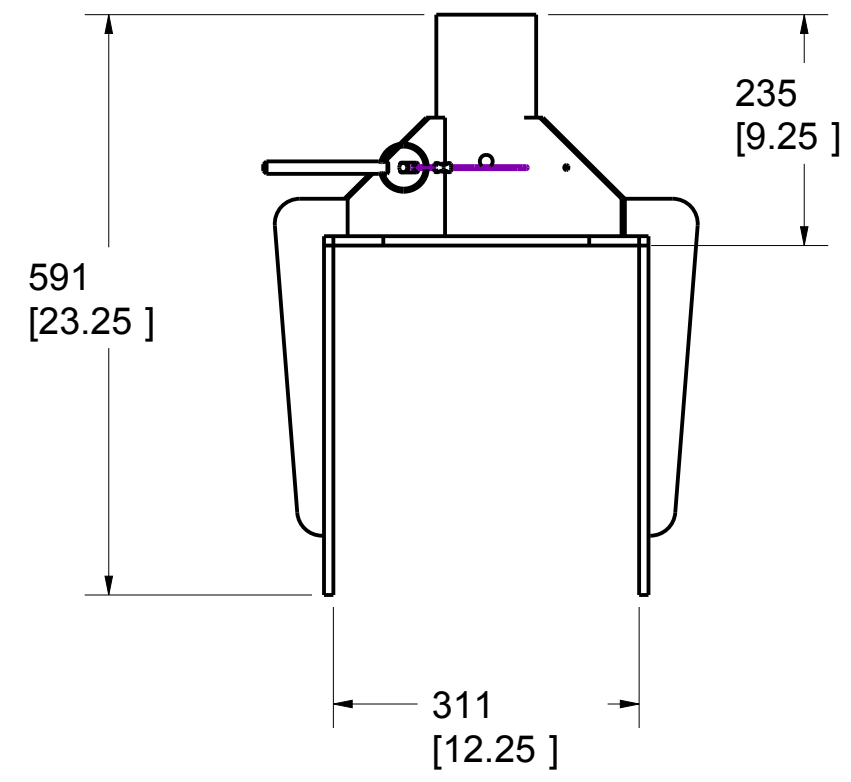
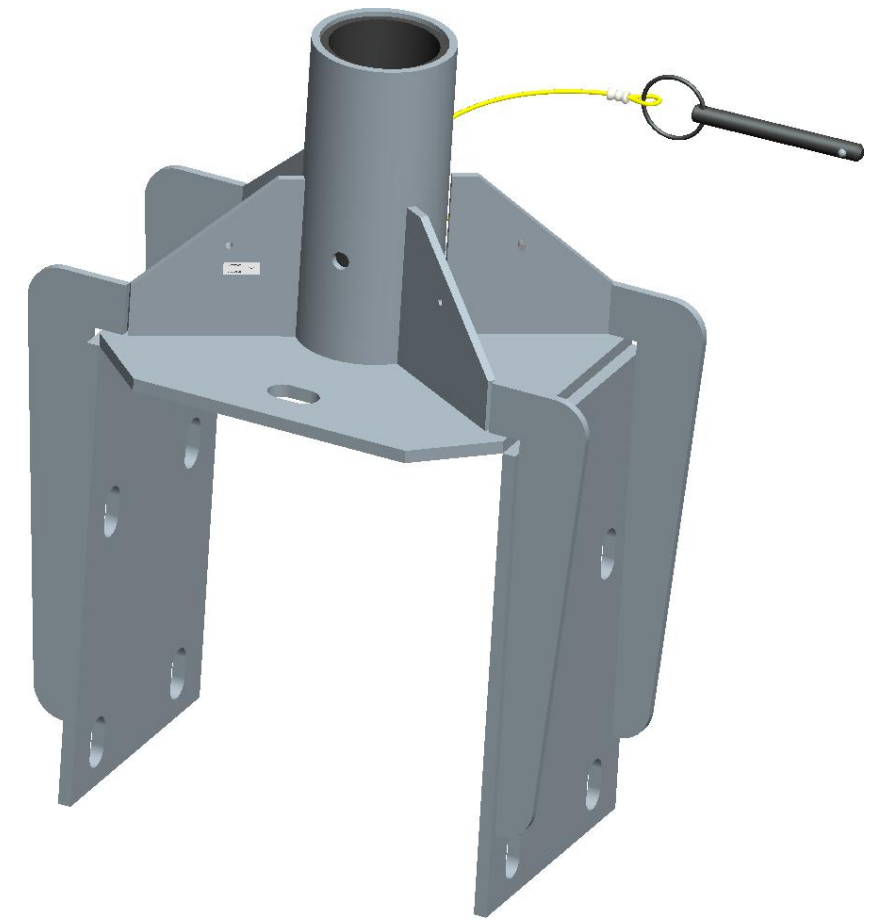
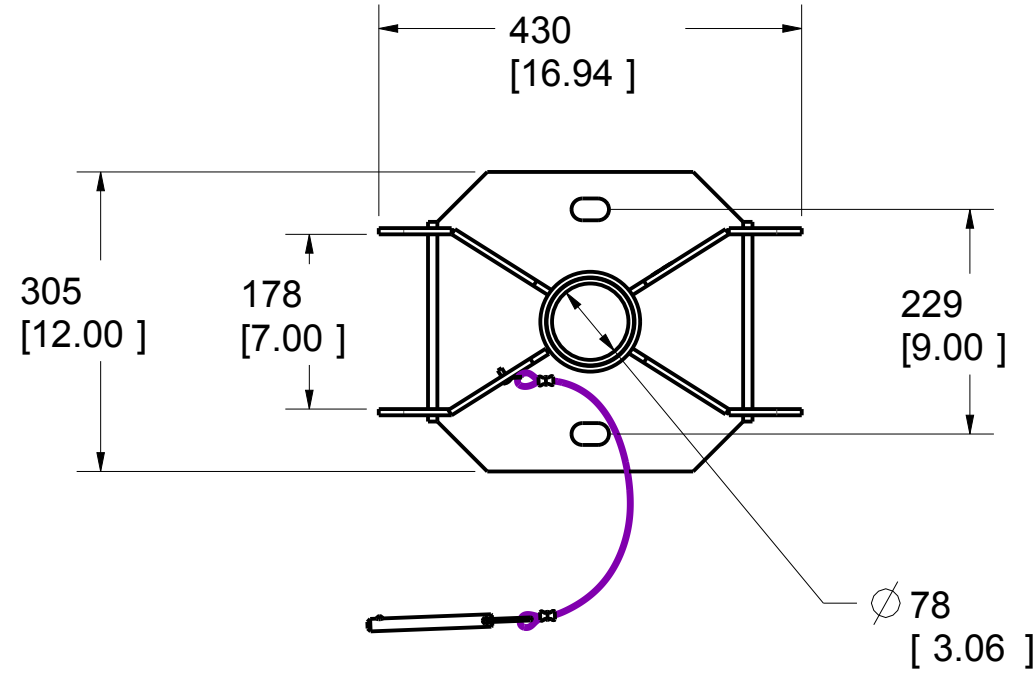
+61 2 4735 3630

E-mail

sales@spanset.com.au

Internet

www.spanset.com.au



PAT. NO.:		©	©
PRODUITS DE SERVICE PUBLICS INNOVA INC. INNOVA PUBLIC UTILITY PRODUCTS INC.			
<small>© 9105-0732 QUEBEC INC. and under exclusive license to INNOVA PUBLIC UTILITY PRODUCTS INC., (hereafter « INNOVA »). All rights reserved. Protected under the Copyright Act of Canada and international treaties and agreements regarding copyrights. Violators are subject to prosecution and other legal recourses for infringement. Any reproduction, adaptation or other use or disclosure whatsoever, in totality or in part, and in any form or by any means whatsoever, strictly forbidden and requires the prior written approval of INNOVA. All data is the exclusive property of 9105-0732 QUEBEC INC. and under exclusive license to INNOVA and cannot be used nor disclosed in any way either without the prior written approval of INNOVA.</small>			
WEIGHT:	TITLE:		
46 Lbs	Wall Fix Adapter 12"		
20.91 Kg			
COLOR:	MATERIAL:	SHEET(S):	PROJECT:
	INOX 304	1 / 4	SPXTIN2205

Product number: SPXTIN2205

Recommandations:

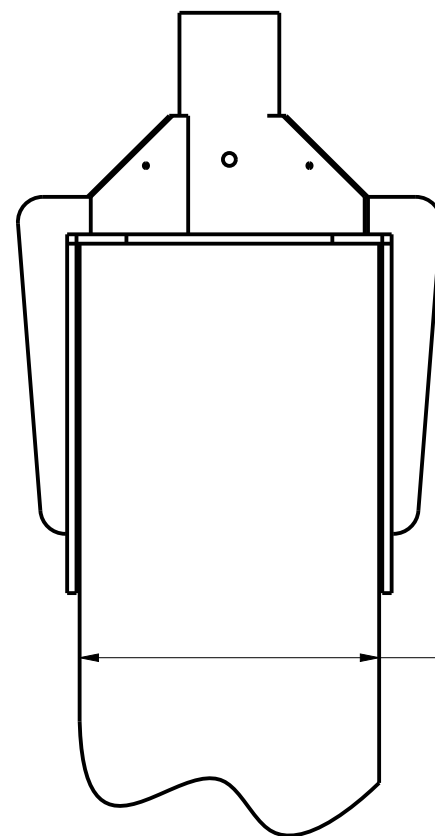
Concrete must be made of 0,2% brut area reinforced 2000psi (13.8 MPa) or better.
Minimum thickness of 8" (203mm).

Moment capacity:

120,000 lbf-in (13,558 N-m)
Vertical load: 5,000 lbf (22,241 N).
N.B. It is the responsibility of the field Engineer to assure installation compliance.

Hardware:

Anchor bolts: Chemical setting 3/4" x 6-5/8" effective holding length and made of 304/316 stainless steel.
Max pulling strength: 17,000 lbf (75,620N N)
To be installed with 3/4" stainless steel washers.



304,8
[12.000]

Maximum recommended Thickness
(Use Shims to compensate when
Wall is less than 11-3/4" , 298mm)

PAT. NO.:		©	©
PRODUITS DE SERVICE PUBLICS INNOVA INC. INNOVA PUBLIC UTILITY PRODUCTS INC.			
© 9105-0732 QUEBEC INC. and under exclusive license to INNOVA PUBLIC UTILITY PRODUCTS INC., (hereafter « INNOVA »). All rights reserved. Protected under the Copyright Act of Canada and international treaties and agreements regarding copyrights. Violators are subject to prosecution and other legal recourses for infringement. Any reproduction, adaptation or other use or disclosure whatsoever, in totality or in part, and in any form or by any means whatsoever, strictly forbidden and requires the prior written approval of INNOVA. All data is the exclusive property of 9105-0732 QUEBEC INC. and under exclusive license to INNOVA and cannot be used nor disclosed in any way either without the prior written approval of INNOVA.			
WEIGHT:	TITLE:		
46 Lbs	Wall Fix Adapter 12"		
20.91 Kg			
COLOR:	MATERIAL:	SHEET(S):	PROJECT:
	INOX 304	2 / 4	SPXTIN2205

SPECIFICATIONS

H This product is man rated with a maximum working capacity of 360lbs (164kg). It is only to be used in conjunction with personal fall arrest equipment that limits the maximum arrerst force (MAF).

G Maximum Working Moment : 976 N-m (8,640 lb-in)
Maximum Moment : 13,558 N-m (120,000 lbf-in)

STANDARDS

F Meets the following standards:
OSHA Personal fall arrest system - 1910.66 App C
ANSI Safety requirements for personal fall arrest system, subsystems and components Z359.1 (R1999) / 2007
CAN/CSA Fall arresters, vertical lifelines, and rails Z259.2.1-98

MATERIAL AND CONSTRUCTION

D Plate, gussets and sleeve : 304 Stainless Steel
Sleeve bearing : PVC Pipe.
Pin : Stainless Steel
Lanyard : Nylon covered Steel Cable
Welding Certification : CSA W59 & W47.1, AWS DI.6

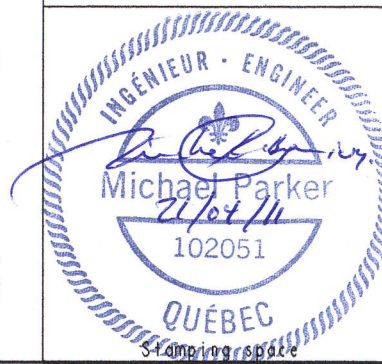
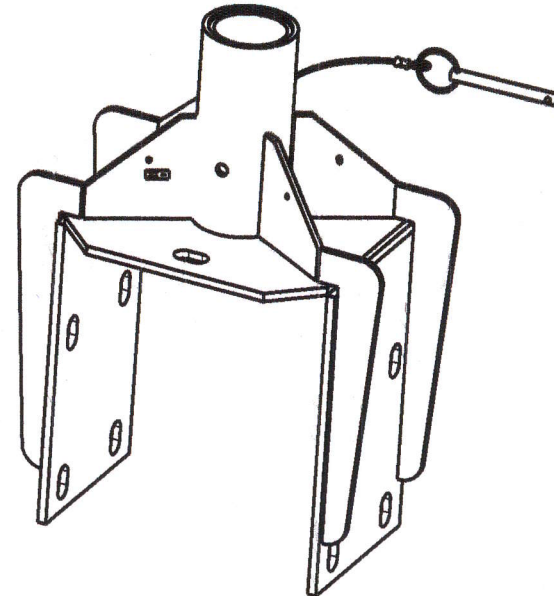
RESTRICTIONS

C Adaptors are designed to function only with Innova public utility products INC. equipment.

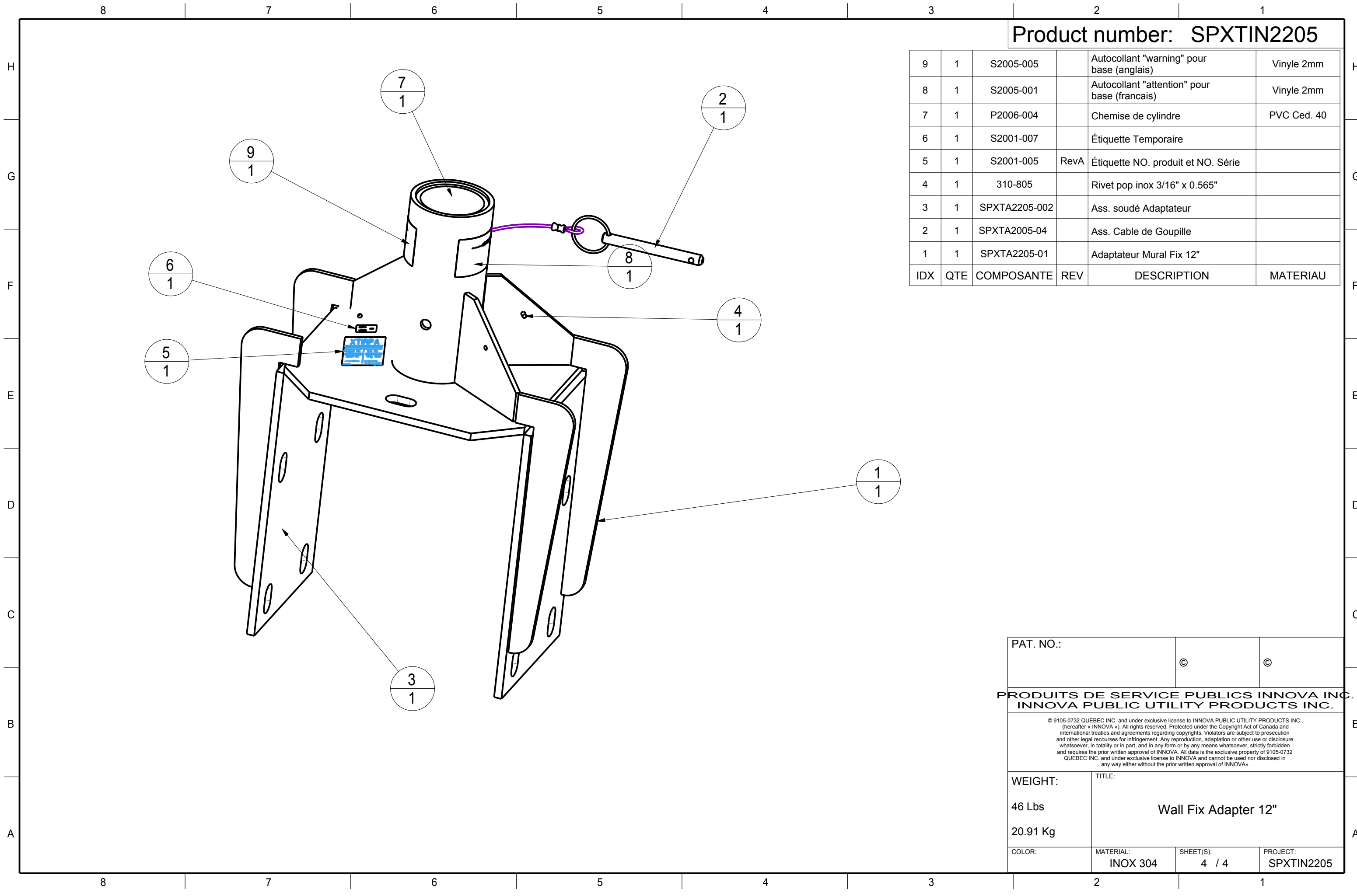
IMPORTANT :

B The positioning pin must always be in place when manouvering personnel. Anchorage hardware must be installed by qualified and experienced personnel. The installer must follow the anchorage hardware manufacturers recommendations at all time. Periodic inspections of hardware must be done. All equipment and hardware must be inspected before re-using by qualified personnel when a fall has occured.

Product number : SPXTIN2205



PAT. NO. :		e	e
PRODUITS DE SERVICE PUBLICS INNOVA INC. INNOVA PUBLIC UTILITY PRODUCTS INC.			
<small>© 9105-0732 QUEBEC INC. and under exclusive license to INNOVA PUBLIC UTILITY PRODUCTS INC. (Inventeur : INNOVA s.l). All rights reserved. Protected under the Copyright Act of Canada and international treaties and agreements regarding copyrights. Violators are subject to prosecution and other legal recourse for infringement. Any reproduction, adaptation or other use or disclosure whatsoever, in whole or in part, and in any form or by any means whatsoever, strictly forbidden and requires the prior written approval of INNOVA. All data is the exclusive property of 9105-0732 QUEBEC INC. and under exclusive license to INNOVA and cannot be used nor disclosed in any way either without the prior written approval of INNOVA.</small>			
WEIGHT:	TITLE:		
46 Lbs	Wall Fix Adapter 12"		
20.91 Kg			
COLOR:	MATERIAL:	SHEET(S):	PROJECT:
	Stainless Steel	3 / 4	SPXTIN2205



Product number: SPXTIN2205

IDX	QTE	COMPOSANTE	REV	DESCRIPTION	MATERIAU
9	1	S2005-005		Autocollant "warning" pour base (anglais)	Vinyle 2mm
8	1	S2005-001		Autocollant "attention" pour base (français)	Vinyle 2mm
7	1	P2006-004		Chemise de cylindre	PVC Ced. 40
6	1	S2001-007		Étiquette Temporaire	
5	1	S2001-005	RevA	Étiquette NO. produit et NO. Série	
4	1	310-805		Rivet pop inox 3/16" x 0.565"	
3	1	SPXTA2205-002		Ass. soudé Adaptateur	
2	1	SPXTA2005-04		Ass. Cable de Goupille	
1	1	SPXTA2205-01		Adaptateur Mural Fix 12"	

PAT. NO.:		©	©
PRODUITS DE SERVICE PUBLICS INNOVA INC. INNOVA PUBLIC UTILITY PRODUCTS INC.			
<small>© 9105-0732 QUEBEC INC. and under exclusive license to INNOVA PUBLIC UTILITY PRODUCTS INC., (hereafter « INNOVA »). All rights reserved. Protected under the Copyright Act of Canada and international treaties and agreements regarding copyrights. Violators are subject to prosecution and other legal recourses for infringement. Any reproduction, adaptation or other use or disclosure whatsoever, in totality or in part, and in any form or by any means whatsoever, strictly forbidden and requires the prior written approval of INNOVA. All data is the exclusive property of 9105-0732 QUEBEC INC. and under exclusive license to INNOVA and cannot be used nor disclosed in any way either without the prior written approval of INNOVA.</small>			
WEIGHT:	TITLE:		
46 Lbs	Wall Fix Adapter 12"		
20.91 Kg			
COLOR:	MATERIAL:	SHEET(S):	PROJECT:
	INOX 304	4 / 4	SPXTIN2205