



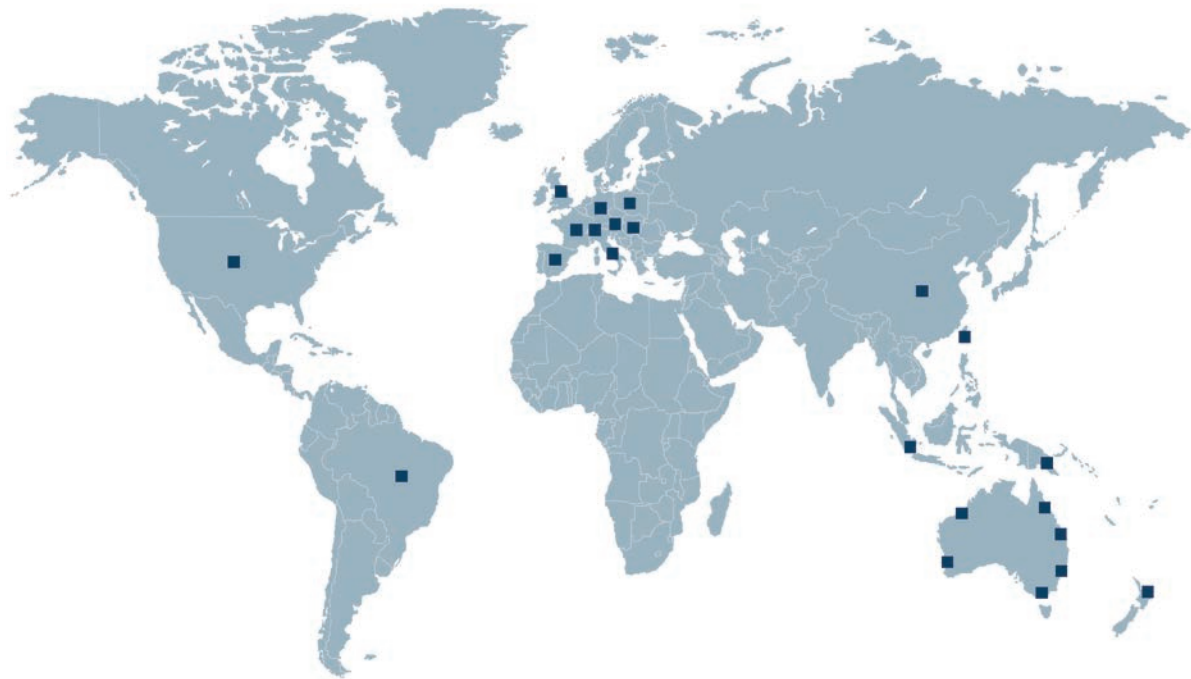
SpanSet®

01

Height Safety
Lifting
Load Control
Safety Management

**SPANSET XTIRPA
CONFINED SPACE
FALL ARREST AND
RESCUE SYSTEMS**

SPANSET XTIRPA CONFINED SPACE FALL ARREST AND RESCUE SYSTEMS



SpanSet is here for you:

Switzerland, Australia, Austria, Brazil, China, France, Germany, Hungary, UK, Indonesia, Italy, Poland, Spain, Taiwan, USA.



Subject to technical alterations. All rights reserved. No part of this catalogue may be reproduced or processed, duplicated or distributed using electronic systems in any form (print, photocopy, microfilm or any other procedure) without the written approval of the SpanSet company. This catalogue has been prepared with all due care; SpanSet accepts no liability for errors or omissions. © 2015 by SpanSet Australia Ltd

Contents

Features and Benefits of the SpanSet Xtirpa System	4
Portable Manhole Guard Davit System	6-9
Tow Bar Hitch Davit Systems	10-15
H-Base Davit System	16-17
Fixed Davit Systems	18-23
Low Clearance Integrated Masr and Davit Arm	18
600mm Davit Mast and Base Kit	18-19
1200mm Davit Mast and Base Kit	20-21
2400mm Davit Mast and Base Kit	22-23
Counterweight System	24-25
Accessories	26-35
Manhole Ladder Extension	26
Manhole Adaptable Hand Rail	26
Davit System Adapters	29-29
SRL and Winch Adapters	30
Pole Hoist System	31
Fall Arrest and Retrieval Manhole Collar Options	32
Multi-Functional Barricade	33
Ratchet Action Manhole Cover Lifter	34
Carry Bags and Trolley	35
Access and Rescue Equipment	36-41
WaterWorks Harnesses	36-38
Spreader Bar	39
Saverline 15m 3-Way Retracting Lifeline	39
Personnel Winch	39
Heavy Duty Tripod	40
4000 Pulley System	41

SPANSET XTIRPA CONFINED SPACE FALL ARREST AND RESCUE SYSTEMS

Features and Benefits

- Portable Manhole Guard Davit System
- Tow Bar Hitch Davit Systems
- H-Base Davit System
- Fixed Davits
- Counterweight System
- Accessories
- Access and Rescue Equipment



Features and Benefits of the SpanSet Xtirpa System



Innovative Design

The only patented system on the market that will allow you to install a davit arm on a manhole guard for rescue purposes.

Lightweight

- Manhold guard
- Davit arm 10.5kg
- Davit mast 10kg.

Using an aluminium composite (Duralcan®), the system has a maximum safe working load of 190.5kg

Ergonomic Design

The system can be easily transported and installed by one person. Set up is safe, easy and can be done in minutes.

More Versatile

The system is designed for multiple use, using different combinations of components to adapt for use in most kinds of confined spaces.

Easy Storage

No vehicle modifications are required and as the units are so compact they don't take up much storage space.

Cost Effective

The system's universality will save inventory costs, and as it reduces the incidence of back, shoulder and elbow injuries it will reduce pay outs on worker's compensation and time away from the workplace.

Built to Last

The aluminium composite used to build the system is highly corrosion resistant and has been independently tested.

Higher Rates of Compliance to Safety Regulations

Owing to the system's simple, safe and quick installation, employers will be able to implement safe working practices easily.

Patents

- European - 1490287
- United States - 7213715
- Canadian - 2479513
- Other patents pending.

Compliance

- Meets or exceeds applicable ANSI, OSHA, CSST and CE Standards.



SPANSET XTIRPA CONFINED SPACE FALL ARREST AND RESCUE SYSTEMS

Features and Benefits

Portable Manhole Guard Davit System

Tow Bar Hitch Davit Systems

H-Base Davit System

Fixed Davits

Counterweight System

Accessories

Access and Rescue Equipment



Portable Manhole Guard Davit System

These portable manhole guards have an integrated mast which, used in conjunction with a davit arm SPXTIN2210, transforms these systems into confined space fall protection and retrieval systems.

These systems will facilitate your access to underground chambers or any other type of confined space where a portable manhole guard is needed.

With a capacity of 191kg (safety factor 10:1) this systems meets or exceeds CSA, ANSI, OSHA, CSST and CE Standards.

Fall Protection and Retrieval Davit Arm with Secondary Block

The fall protection and retrieval davit arm with secondary block will facilitate your access to underground chambers and any other confined space. Light, reliable and easy to install, this versatile davit arm can be used not only with the Portable Manhole Guard but also with the Tow Bar Hitch System, the H-Base System and the Mast Systems.

Its weight of only 15kg provides a capacity of 163kg when used with a Mast System, and a capacity of 191kg when used with the Manhole Guard System. With a 10:1 safety factor it is also equipped with a required 2,268kg anchor point requested by safety regulations and meets or exceeds CSA, ANSI, OSHA, CSST and CE Standards.

The system is infinitely expandable with the addition of extra barricade sections.

SPXTIN2108 - 1060mm Portable Manhole Guard



SPXT2 Portable Manhole Guard Davit System (SPXT3 with Stabiliser)

SPANSET XTIRPA CONFINED SPACE FALL ARREST AND RESCUE SYSTEMS

Features and Benefits

Portable Manhole Guard Davit System

Tow Bar Hitch Davit Systems

H-Base Davit System

Fixed Davits

Counterweight System

Accessories

Access and Rescue Equipment



Portable Manhole Guard Davit System



SPXTIN2210 - Davit Arm

SPXTIN2108 Manhole Guard

Maximum Working Load with Davit Arm SPXTIN2210	191kg
Maximum Capacity at Anchorage Point	22.2kN
Weight	13kg
Corner Mast Length	113.7cm
Height	105.7cm
Length	98cm
Depth	99.1cm
Structural Tubes	Duralcan Aluminium
Levelling Screws	Stainless Steel Rubber
Hardware	Zinc Plated Steel
Finish	Security Yellow

SPXTIN2210 Davit Arm

Working Load Mass with Manhole Guard SPXTIN2108	191kg
Maximum Capacity with Lifeline Winch & Barricade - Position 1 and 2	19kN
Maximum Capacity with Material Handling - Position 3	9.5kN
Maximum Capacity at Anchorage Point	22kN
Weight	15kg
Length When Opened	203cm
Length When Closed	132cm
Extension and Guide Tubes	Aluminium
Davit Arm Link	Aluminium
Anchorage Hooks	Stainless Steel
Hardware	Zinc Plated Steel
Guide Tube Sliders	Ultra High Molecular-weight Polyethylene
Pulley	Black Acetal
Finish	Security Yellow

SPANSET XTIRPA CONFINED SPACE FALL ARREST AND RESCUE SYSTEMS

Features and Benefits

Portable Manhole Guard Davit System

Tow Bar Hitch Davit Systems

H-Base Davit System

Fixed Davits

Counterweight System

Accessories

Access and Rescue Equipment



Portable Manhole Guard Davit System

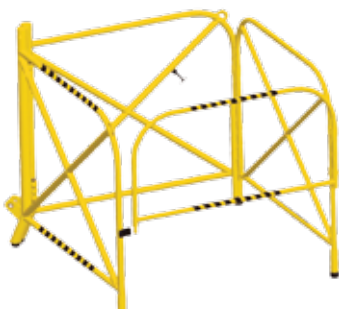


SPXTIN2108-18 - Stabiliser for 1060mm Portable Manhole Guard

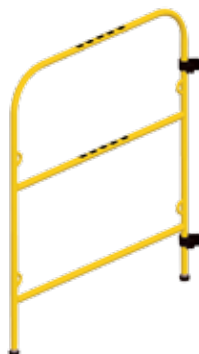


SPXTIN52 - Manhole Guard Repositioning Wheels

Also Available:



SPXTIN2001 - 875mm Portable Manhole Guard



SPXTA2101-04 - Multi-function barricade extension



SPXTA2001-18 - Spiked Manhole Guard Feet
SPXTA2001-28 - Large Rubber Feet for Manhole Guard

SPXTIN2108-18 1060mm Stabiliser

Weight	2kg
Height	46.6cm
Width	52.1cm
Depth	37.4cm
Structural Tubes	Duralcan Aluminium
Levelling Screws	Stainless Steel Rubber
Hardware	Zinc Plated Steel
Finish	Security Yellow

SPXTIN52 - Repositioning Wheels

Weight	17.5kg
Height	500mm
Width	650mm
Depth	700mm
Structural Tubes	Rectangular Sectioned Steel
Wheels	Ball Bearing No-Flat Rubber
Finish	Black Powder Coated



DANGER

Confined Space
Entry by Permit
Only

SPANSET XTIRPA CONFINED SPACE FALL ARREST AND RESCUE SYSTEMS

Features and Benefits

Portable Manhole Guard Davit System

Tow Bar Hitch Davit Systems

H-Base Davit System

Fixed Davits

Counterweight System

Accessories

Access and Rescue Equipment



600mm Tow Bar Hitch Davit System



The most versatile system on the market, the Tow Bar Hitch Mount connects to most 50mm square vehicle receiver hitches, our most popular system offers adjustable screw pads for easy levelling.

This system uses the same davit arm as the Manhole Guard Davit System (SPXTIN2210) and gives a maximum capacity of 164kg and has a safety factor of 10:1 and meets or exceeds CSA, ANSI, OSHA, CSST and CE Standards.

SPXTIN2126 - Trailer Hitch Mount



SPXT6 - Tow Bar Hitch Davit System

SPANSET XTIRPA CONFINED SPACE FALL ARREST AND RESCUE SYSTEMS

Features and Benefits
 Portable Manhole Guard Davit System
Tow Bar Hitch Davit Systems
 H-Base Davit System
 Fixed Davits
 Counterweight System
 Accessories
 Access and Rescue Equipment



Tow Bar Hitch Davit System

SPXTIN2210 Davit Arm

See Portable Manhole Guard Davit System for specifications

SPXTIN2003 Mast

Working Load Mass with Davit Arm SPXTIN2210	164kg
Maximum Capacity with Davit Arm SPXTIN2210	16kN
Weight	10kg
Mast Material	Aluminium
Anchorage Plates	Aluminium
Finish	Security Yellow

SPXTIN2126 Tow Bar Hitch Mount

Working Load Mass with Mast SPXTIN2003 and Davit Arm SPXTIN2210	164kg
Maximum Capacity with Mast and Davit Arm SPXTIN2210	16kN
Hitch Vehicle Minimum Weight	2727kg
Weight	14kg
Extensions	Aluminium
Mast Sleeve	Aluminium
Extension Sliders	Black Delrin
Positioning Levels and Hardware	Zinc Plated Steel
Positioning Pads	Aluminium
Finish	Security Yellow



SPXTIN2003 - Davit Mast

SPANSET XTIRPA CONFINED SPACE FALL ARREST AND RESCUE SYSTEMS

Features and Benefits

Portable Manhole Guard Davit System

Tow Bar Hitch Davit Systems

H-Base Davit System

Fixed Davits

Counterweight System

Accessories

Access and Rescue Equipment



600mm Tow Bar Hitch Davit System



SPXTIN2210 - Davit Arm

SPXTIN2210 Davit Arm

See Portable Manhole Guard Davit System for details

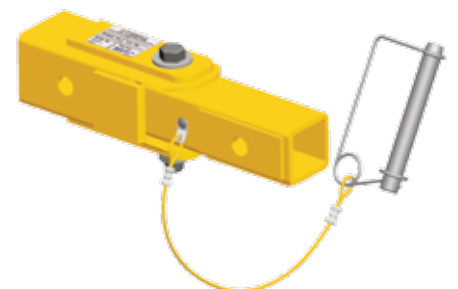
SPXTA2126-21 Anchor Bolt Adaptor

Maximum Capacity	164kg
Maximum Working Moment	0.95kN/m
Maximum Moment	0.95kN/m
Weight	15kg
Principal Body and Guide	Zinc Plated Stainless Steel
Hardware	Steel
Plate Support	Steel

SPXTA2126-21 - Anchor Bolt Adaptor for Trailer Hitch Mount



SPXTA2126-07 - Universal Joint for Trailer Hitch Mount



SPANSET XTIRPA CONFINED SPACE FALL ARREST AND RESCUE SYSTEMS

- Features and Benefits
- Portable Manhole Guard Davit System
- Tow Bar Hitch Davit Systems**
- H-Base Davit System
- Fixed Davits
- Counterweight System
- Accessories
- Access and Rescue Equipment



SPXTA2126-10 90° Extension

Weight	29kg
Length	132cm
Working Height	35.6cm
Width	5.1cm ²
Material	Steel
Finish	Security Yellow

SPXTA2126-09 Straight Extension

Weight	14kg
Length	193.7cm
Width	5.1cm ²
Material	Steel

SPXTA2126-07 Universal Joint

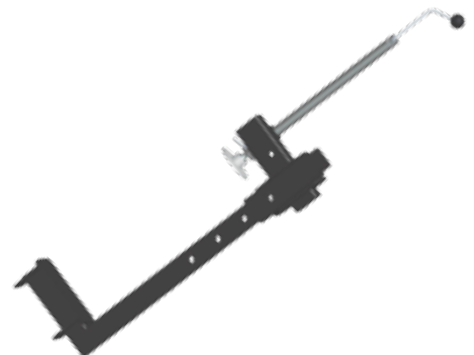
Weight	3.6kg
Length	28.5cm
Width	5.08cm ²
Material	Steel



SPXTA2126-10 - 90 Degree Extension for Trailer Hitch Mount



SPXTA2126-09 - 6ft (183cm) Extension for Trailer Hitch Mount



SPXTIN2126-14 - C Clamp Adapter for Trailer Hitch Mount

SPANSET XTIRPA CONFINED SPACE FALL ARREST AND RESCUE SYSTEMS

- Features and Benefits
- Portable Manhole Guard Davit System
- Tow Bar Hitch Davit System**
- H-Base Davit Systems
- Fixed Davits
- Counterweight System
- Accessories
- Access and Rescue Equipment



1200mm Tow Bar Hitch Davit System



SPANSET XTIRPA CONFINED SPACE FALL ARREST AND RESCUE SYSTEMS

Features and Benefits
 Portable Manhole Guard Davit System
Tow Bar Hitch Davit System
 H-Base Davit Systems
 Fixed Davits
 Counterweight System
 Accessories
 Access and Rescue Equipment



SPXTIN2305 Universal T-Base

Working Load Mass with Mast SPXTIN2240 and Davit Arm SPXTIN2237	164kg
Maximum Capacity with Mast SPXTIN2240 and Davit Arm SPXTIN2237	16kN
Hitch Vehicle Minimum Weight	2727kg
Weight	33kg
Extensions	Aluminium
Mast Sleeve	Aluminium
Extension Sliders	Black Delrin
Positioning Levels and Hardware	Zinc Plated Steel
Positioning Pads	Aluminium
Finish	Security Yellow

SPXTIN2240 Mast

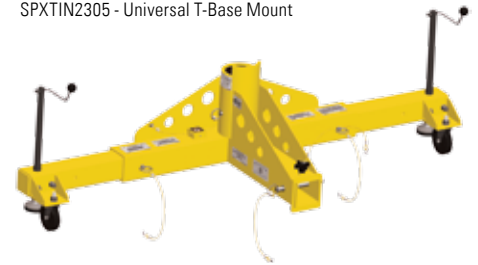
Maximum Working Load with Davit Arm SPXTIN2237	164kg
Maximum Capacity with Davit Arm SPXTIN2237	16kN
Weight	11kg
Mast	Aluminium
Handle	Aluminium
Finish	Security Yellow

SPXTIN2237 1200mm Davit Arm

Maximum Working Load with Mast SPXTIN2240	164kg
Maximum Capacity with Mast SPXTIN2240	16kN
Maximum Capacity at Anchor Point	22kN
Weight	16kg
Extension and Guide Tubes	Aluminium
Anchorage Hooks	Stainless Steel
Hardware	Zinc Plated Stainless Steel
Guide Tube Sliders	Ultra High Molecular-weight Polyethylene
Pulley	Black Acetal
Finish	Security Yellow

1200mm Tow Bar Hitch Davit System

SPXTIN2305 - Universal T-Base Mount



SPXTIN2240 - Davit Mast



SPANSET XTIRPA CONFINED SPACE FALL ARREST AND RESCUE SYSTEMS

Features and Benefits

Portable Manhole Guard Davit System
Tow Bar Hitch Davit Systems

H-Base Davit System

Fixed Davits
Counterweight System
Accessories
Access and Rescue Equipment



H-Base Davit System

This three-piece hoist system was designed to be used in conjunction with the davit arm SPXTIN2210 and the mast SPXTIN2003 that are common to the three davit systems. The portable lower base with adjustable feet to fit most standard confined spaces. It offers a solution for the entry, rescue and positioning of personnel.

The combination of davit arm and mast allows the operator to pivot the system for easier and safer rescue. Durable and versatile, the system has a capacity of 164kg and has a safety factor of 10:1 and meets or exceeds CSA, ANSI, OSHA, CSST and CE Standards.

SPXTIN2210 Davit Arm

See Tow Bar Hitch Davit System for specifications

SPXTIN2003 Mast

See Tow Bar Hitch Davit System for specifications

SPXTIN2118 H-Base

Maximum Working Load with Mast and Davit Arm SPXTIN2210	164kg
Maximum Capacity with Mast and Davit Arm	16kN
Weight	36.82kg
Extensions	Aluminium
Mast Sleeve	Aluminium
Suspension and Anchor Points	Aluminium
Extension Sliders	PVC Pipe
Positioning Levels and Hardware	Zinc Plated Stainless Steel
Positioning Pads	Aluminium
Finish	Security Yellow



SPXTIN2003 - Davit Mast



SPXTIN2210 - Davit Arm

SPANSET XTIRPA CONFINED SPACE FALL ARREST AND RESCUE SYSTEMS

Features and Benefits

Portable Manhole Guard Davit System

Tow Bar Hitch Davit Systems

H-Base Davit System

Fixed Davits

Counterweight System

Accessories

Access and Rescue Equipment



H-Base Davit System

SPXTIN2118 - H-Base



SPXT5 - H-Base Davit System



SPANSET XTIRPA CONFINED SPACE FALL ARREST AND RESCUE SYSTEMS

Features and Benefits

- Portable Manhole Guard Davit System
- Tow Bar Hitch Davit Systems
- H-Base Davit System

Fixed Davits

- Counterweight System
- Accessories
- Access and Rescue Equipment



Low Clearance Integrated Mast and Davit Arm

This low clearance davit with an integrated mast and davit arm is designed for use in any of the 610mm adapter bases. Ideal for when a shorter clearance is required. The unit weighs 7kg and has a weight capacity of 163kg, is 915mm in height and has a 460mm reach.

SPXTIN2295 Low Clearance Mast and Davit



SPXTIN2363 Short Reach Mast and Davit

SpanSet Xtirpa Short Reach Mast and Davit Arm

Low clearance integrated mast and davit arm for use in any of the 610mm adapter bases when a shorter clearance is needed. The unit weighs 7kg, is 915mm high and has a 229mm reach.

600mm Davit Mast and Base Kit

This unique, adjustable davit system was developed to allow workers greater versatility, with the mast adapter permanently fixed to a structure and the davit arm and mast moved around as required. Ensuring easy and safe access into a wide variety of confined spaces this davit is easily positioned from 380mm,

450mm and 600mm. The davit's versatility offers a solution where other conventional systems are impractical.

With a safety factor of 10:1 the davit meets or exceeds CSA, ANSI, OSHA, CSST and CE Standards.

Code	Description	Min Reach	Max Reach	Max Height
SPXT24	600mm Davit, Mast and Base kit	385mm	601mm	2992mm
SPXTIN2210	600mm Davit Arm	–	–	–
SPXTIN2003	Standard Mast	–	–	–
SPXTIN2044	380mm Mast Extension	–	–	3372mm
SPXTIN2109	450mm Mast Extension	–	–	3442mm
SPXTIN2045	600mm Mast Extension	–	–	3592mm
SPXTIN2005	Stainless Steel Floor Adapter	–	–	–

SPXTIN2210 Davit Arm

See Tow Bar Hitch Davit System for details

SPXTIN2003 Mast

See Tow Bar Hitch Davit System for details

SPANSET XTIRPA CONFINED SPACE FALL ARREST AND RESCUE SYSTEMS

Features and Benefits

- Portable Manhole Guard Davit System
- Tow Bar Hitch Davit Systems
- H-Base Davit System

Fixed Davits

- Counterweight System
- Accessories
- Access and Rescue Equipment



600mm Davit Mast and Base Kit

SPXT24 - 600mm [24"] Davit System



SPXTIN2005 Stainless Steel Floor Adapter

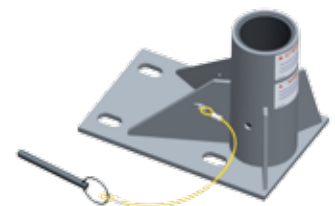
Maximum Working Moment	0.97kN
Maximum Moment	13.5kN
Weight	10kg
Plate and Gussets	Stainless Steel
Sleeve	Stainless Steel
Sleeve Bearing	Acetal Black Delrin
Pin	Zinc Plated Stainless Steel
Lanyard	Nylon Covered Steel Cable

SPXTIN2044 380mm/450mm/600mm Mast Extensions

Maximum Working Load with Davit Arm SPXTIN2210	164kg
Maximum Capacity with Davit Arm SPXTIN2210	16kN
Weights	9kg/11kg/12kg
Cylinder and Sleeve	Steel DOM 1026
Pin	Zinc Plated Stainless Steel
Lanyard	Nylon Covered Steel Cable
Finish	Security Yellow



SPXTIN2045 - 600mm Mast Extension



SPXTIN2005 - Stainless Steel Floor Adapter

SPANSET XTIRPA CONFINED SPACE FALL ARREST AND RESCUE SYSTEMS

Features and Benefits

- Portable Manhole Guard Davit System
- Tow Bar Hitch Davit Systems
- H-Base Davit System

Fixed Davits

- Counterweight System
- Accessories
- Access and Rescue Equipment



1200mm Davit Mast and Base Kit

This unique, adjustable davit system was developed to allow workers greater versatility, with the mast adapter permanently fixed to a structure and the davit arm and mast moved around as required.

Ensuring easy and safe access into a wide variety of confined spaces this davit is easily positioned from 775mm, 915mm and 1200mm. The davit's versatility offers a solution where other conventional systems are impractical.

With a safety factor of 10:1 the davit meets or exceeds CSA, ANSI, OSHA, CSST and CE Standards.



SPXTIN2240 - Davit Mast

Code	Description	Min Reach	Max Reach	Max Height
SPXT48	1200mm Davit, Mast and Base Kit	775mm	1200mm	2224mm
SPXTIN2237	1200mm Davit Arm	–	–	–
SPXTIN2240	Mast	–	–	–
SPXTIN2238	Stainless Steel Floor Adapter	–	–	–
SPXTIN2238	Stainless Steel Floor Adapter	–	–	–

SPXTIN2237 1200mm Davit Arm

Maximum Working Load with Mast SPXTIN2240	164kg
Maximum Capacity with Mast SPXTIN2240	16kN
Maximum Capacity at Anchor Point	22kN
Weight	22.5kg
Extension and Guide Tubes	Aluminium
Anchorage Hooks	Stainless Steel
Hardware	Zinc Plated Stainless Steel
Guide Tube Sliders	Ultra High Molecular-weight Polyethylene
Pulley	Black Acetal
Finish	Security Yellow

SPXTIN2240 Mast

Maximum Working Load with Davit Arm SPXTIN2237	164kg
Maximum Capacity with Davit Arm SPXTIN2237	16kN
Weight	11kg
Mast	Aluminium
Handle	Aluminium
Finish	Security Yellow

SPANSET XTIRPA CONFINED SPACE FALL ARREST AND RESCUE SYSTEMS

Features and Benefits

Portable Manhole Guard Davit System

Tow Bar Hitch Davit Systems

H-Base Davit System

Fixed Davits

Counterweight System

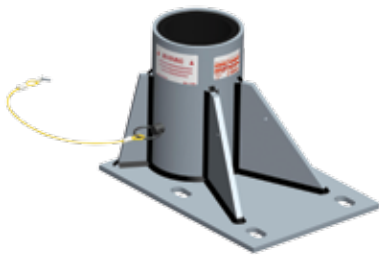
Accessories

Access and Rescue Equipment



1200mm Davit Mast and Base Kit

SPXTIN2238 - 102mm Floor Adapter



SPXT48 - Mast and Base Kit



SPXTIN2237 - Extendable Davit Arm

SPXTIN2238 Stainless Steel Floor Adapter

Maximum Working Moment	1.9kN
Maximum Moment	19.5kN
Weight	16kg
Plate and Gussets	Stainless Steel
Sleeve	Stainless Steel
Sleeve Bearing	Acetal Black Delrin
Pin	Zinc Plated Stainless Steel
Lanyard	Nylon Covered Steel Cable

SPANSET XTIRPA CONFINED SPACE FALL ARREST AND RESCUE SYSTEMS

Features and Benefits

Portable Manhole Guard Davit System

Tow Bar Hitch Davit Systems

H-Base Davit System

Fixed Davits

Counterweight System

Accessories

Access and Rescue Equipment



2400mm Davit Mast and Base Kit

This unique, adjustable davit system was developed to allow workers greater versatility, with the mast adapter permanently fixed to a structure and the davit arm and mast moved around as required.

Ensuring easy and safe access into a wide variety of confined spaces this davit is easily positioned from 1525mm to 2430mm. The davit's versatility offers a solution where other conventional systems are impractical.

With a safety factor of 10:1 the davit meets or exceeds CSA, ANSI, OSHA, CSST and CE Standards.

Code	Description	Min Reach	Max Reach	Max Height
SPXT96	2400mm Davit, Mast and Base Kit	1525mm	2430mm	2785mm
SPXTIN2197	2400mm Davit Arm	–	–	–
SPXTIN2199	Mast	–	–	–
SPXTIN2201	Stainless Steel Floor Adapter	–	–	–
SPXTIN2238	Stainless Steel Floor Adapter	–	–	–

SPXTIN2197 - 2400mm Davit Arm



SPXTIN2197 Davit Arm

Maximum Working Load with Winch and Mast SPXTIN2199 Position 1 or 2	164kg
Maximum Capacity Material Handling with Mast SPXTIN2199 Position 1 or 2	16kN
Maximum Capacity at Anchor Point	22kN
Weight	63kg
Length When Opened	203cm
Length When Closed	132cm
Extension and Guide Tubes	Aluminium
Davit Arm Link	Aluminium
Anchorage Hooks	Stainless Steel
Hardware	Zinc Plated Steel
Guide Tube Sliders	Ultra High Molecular-weight Polyethylene
Pulley	Black Acetal
Finish	Security Yellow

SPANSET XTIRPA CONFINED SPACE FALL ARREST AND RESCUE SYSTEMS

Features and Benefits

Portable Manhole Guard Davit System

Tow Bar Hitch Davit Systems

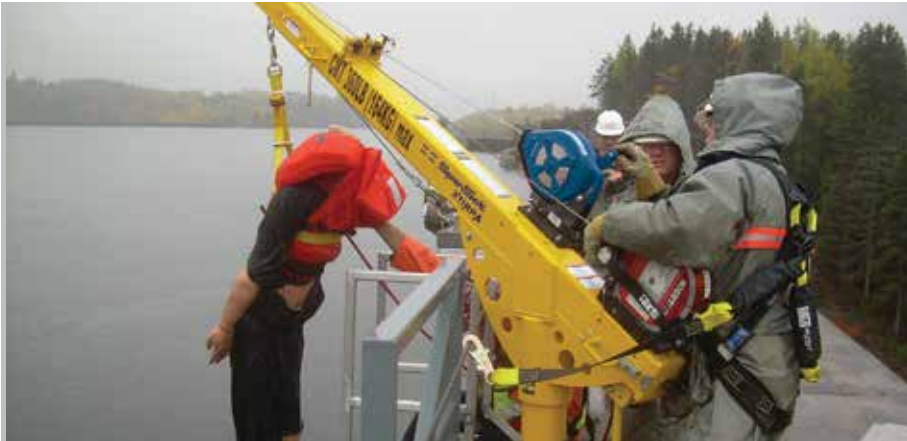
H-Base Davit System

Fixed Davits

Counterweight System

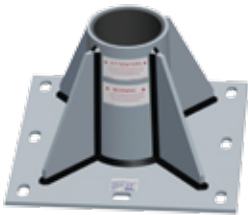
Accessories

Access and Rescue Equipment

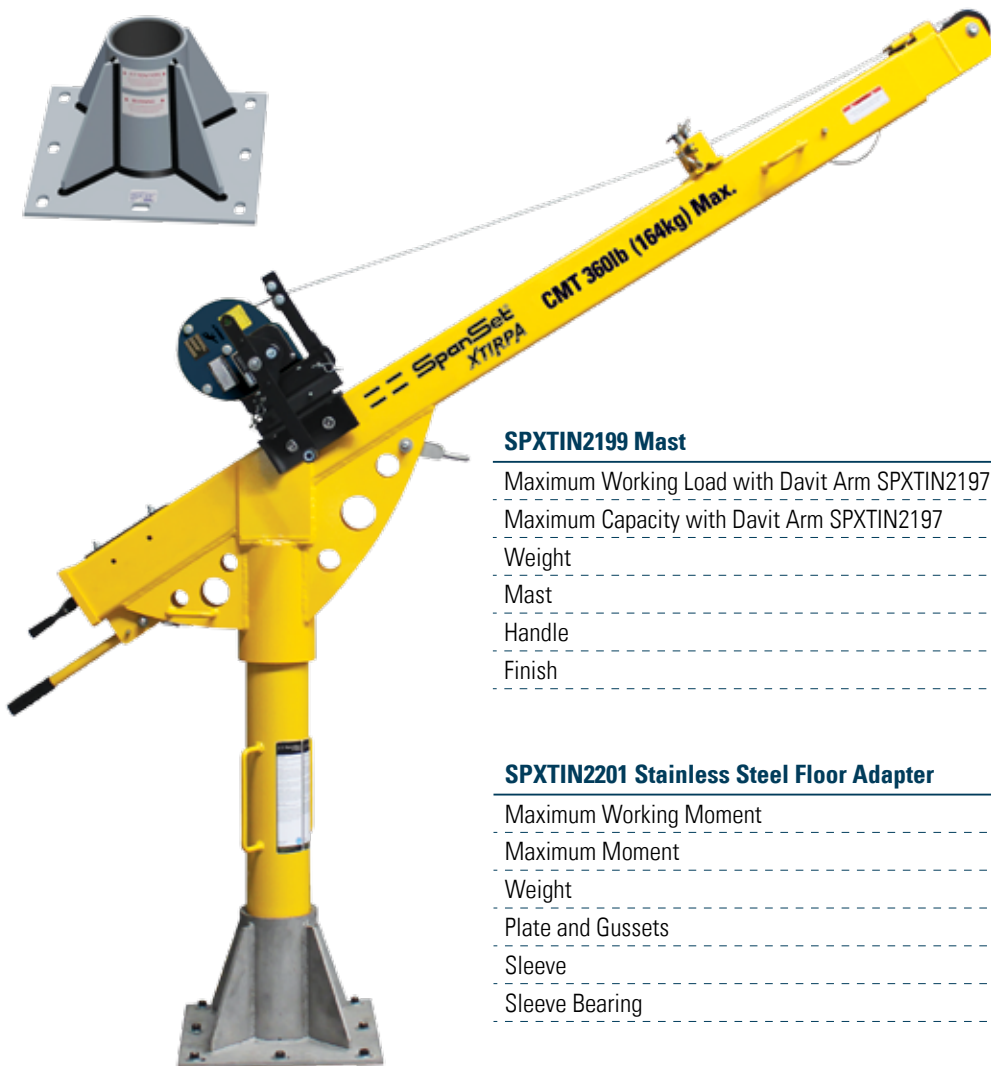


2400mm Davit Mast and Base Kit

SPXTIN2201 - 2400mm Floor Mount Adapter



SPXTIN2199 - Davit Mast



SPXTIN2199 Mast

Maximum Working Load with Davit Arm SPXTIN2197	164kg
Maximum Capacity with Davit Arm SPXTIN2197	16kN
Weight	15.5kg
Mast	Aluminium
Handle	Aluminium
Finish	Security Yellow

SPXTIN2201 Stainless Steel Floor Adapter

Maximum Working Moment	3.9kN
Maximum Moment	39kN
Weight	30kg
Plate and Gussets	Stainless Steel
Sleeve	Stainless Steel
Sleeve Bearing	PVC Pipe

SPANSET XTIRPA CONFINED SPACE FALL ARREST AND RESCUE SYSTEMS

Features and Benefits

Portable Manhole Guard Davit System

Tow Bar Hitch Davit Systems

H-Base Davit System

Fixed Davits

Counterweight System

Accessories

Access and Rescue Equipment



Counterweight System

This counterweight system is designed for multiple confined space access in the same area where the extra reach of the 1200mm davit arm is required. Additionally, it can be used in areas where a fixed base is not possible.

The system consists of a central unit to which a number of optional equipment can be added, including extensions, leg adjustment and anchoring options.

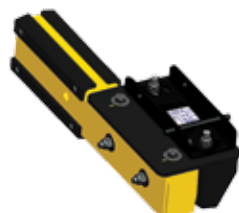
With a weight capacity of 163kg this system can be used in conjunction with a counterbalancing weight rack or a wheel pad assembly when using a vehicle. The davit arm has a 2270kg anchor point.

SPXTIN2237 - Extendable Arm for 1200mm Davit



SPXTIN2240 - Davit Mast for 1200mm Davit
1070mm Height

SPXTIN2313 - Davit Mast for 1200mm Davit
1070mm Height



SPXTA2237-06 - Removable Adapter for Positioning Winch

SPANSET XTIRPA CONFINED SPACE FALL ARREST AND RESCUE SYSTEMS

Features and Benefits

Portable Manhole Guard Davit System

Tow Bar Hitch Davit Systems

H-Base Davit System

Fixed Davits

Counterweight System

Accessories

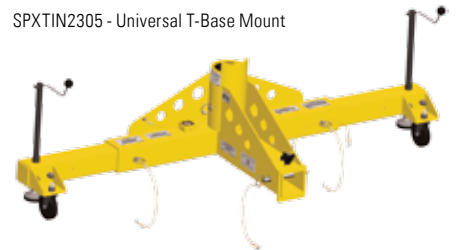
Access and Rescue Equipment



Counterweight System

Required Components

SPXTIN2305 - Universal T-Base Mount



SPXTA2305-27 - Counterweight Base



SPXTP2305-16n - 23kg Counterweight Weight Plates

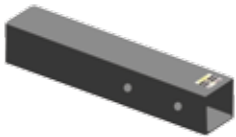


SPXTA2305-23 Counterweight Base Extension Tube



Optional Accessories

SPXTA2305-25 - Counterweight Adapter for 1830mm Extension



SPXTA2305 Water Counterweight



SPXTA2305-16 - T-Base Mount Extension 1830mm



SPANSET XTIRPA CONFINED SPACE FALL ARREST AND RESCUE SYSTEMS

Features and Benefits

Portable Manhole Guard Davit System

Tow Bar Hitch Davit Systems

H-Base Davit System

Fixed Davits

Counterweight System

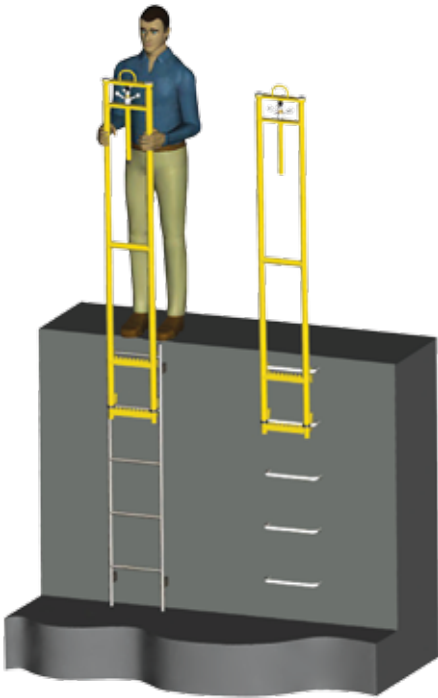
Accessories

Access and Rescue Equipment



Manhole Ladder Extension

The SpanSet Xtirpa Manhole Ladder Extension helps to provide extra safety by offering a secure handhold when entering a manhole from ground level, reducing the chance of slips or falls.



SPXTIN2252-05 - Manhole Ladder Extension

Manhole Adaptable Hand Rail

This adaptable hand rail is used with davit mast SPXTIN2003 and allows safer and easier entry and egress from confined spaces by providing secure handholds. The hand rail weighs 2.5kg.



SPXTIN2282 - Manhole Adaptable Hand Rail

SPANSET XTIRPA CONFINED SPACE FALL ARREST AND RESCUE SYSTEMS

Features and Benefits

- Portable Manhole Guard Davit System
- Tow Bar Hitch Davit Systems
- H-Base Davit System
- Fixed Davits
- Counterweight System

Accessories

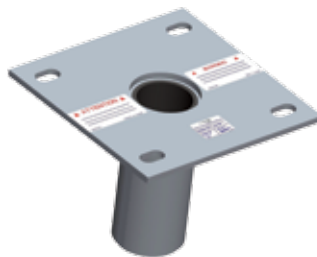
- Access and Rescue Equipment



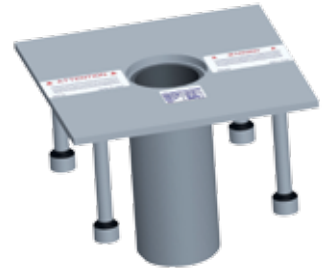
Davit System Adapters



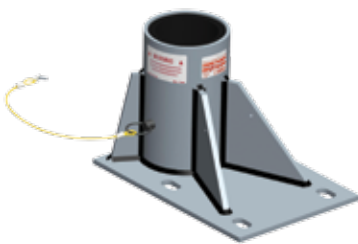
SPXTIN2266 - Flush Floor Adapter for 102mm Mast



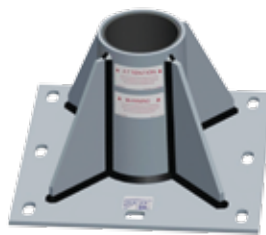
SPXTIN2006 - Flush Floor Adapter (steel) SPXTIN2114 - (zinc)



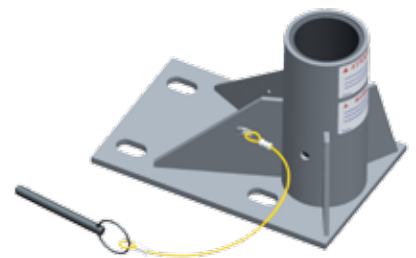
SPXTIN2007 Fresh Concrete Flush Floor Adapter



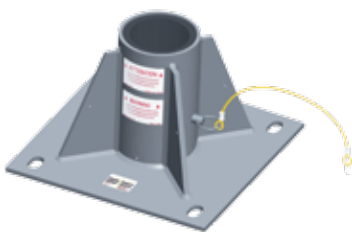
SPXTIN2238 - 1200mm Floor Mount Adapter (stainless steel)



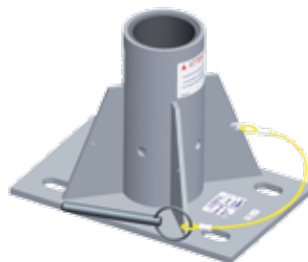
SPXTIN2201 - 2400mm Floor Mount Adapter (stainless steel)



SPXTIN2005 - 600mm Floor Mount Adapter (stainless steel)
SPXTIN2106 - (zinc)



SPXTIN2254 - Centre Mounted Floor Adapter for 102mm Mast



SPXTIN2105 - Centre Mounted Floor Adapter SPXTIN2137 - (zinc)



SPXTIN2255 - Sleeve Adapter for 102mm Mast

SPANSET XTIRPA CONFINED SPACE FALL ARREST AND RESCUE SYSTEMS

Features and Benefits

Portable Manhole Guard Davit System

Tow Bar Hitch Davit Systems

H-Base Davit System

Fixed Davits

Counterweight System

Accessories

Access and Rescue Equipment



Davit System Adapters



SPXTIN2097 - 600mm Sleeve Adapter (stainless steel)
SPXTIN2115 - (zinc)



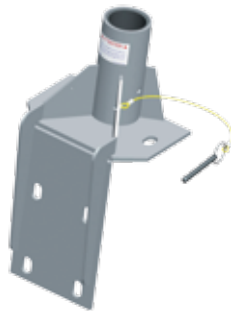
SPXTA2201-03 - Cylinder Reducer 140mm to 76mm



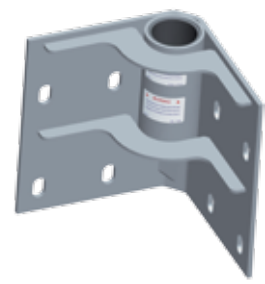
SPXTIN2013 - 600mm Wall Mount Adaptor (stainless steel)
SPXTIN2107 - (zinc)



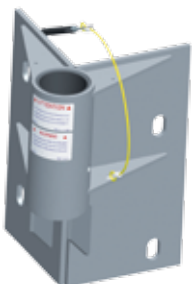
SPXTIN2087 - Wall Mounted Universal Ring Adapter (stainless steel)



SPXTIN2117 90° Angle Wall Adapter (stainless steel)



SPXTIN2133 - Inner 90° Corner Mounted Adapter (stainless steel) SPXTIN2134 - (zinc)



SPXTIN2131 - Extended 90° Corner Mounted Adapter (stainless steel) SPXTIN2132 - (zinc)



SPXTIN2171 - SGE30MVA Transformer Adapter



SPXTIN2208 - Sliding Adapter for 380mm x 140mm Beams

SPANSET XTIRPA CONFINED SPACE FALL ARREST AND RESCUE SYSTEMS

Features and Benefits

Portable Manhole Guard Davit System

Tow Bar Hitch Davit Systems

H-Base Davit System

Fixed Davits

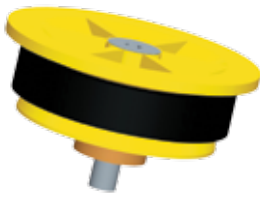
Counterweight System

Accessories

Access and Rescue Equipment



Davit System Adapters



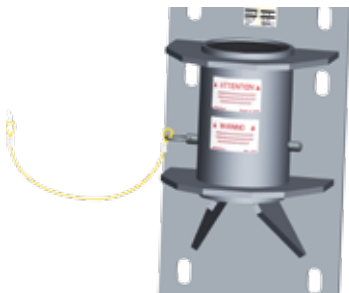
SPXTIN2072 - Adapter Cap
SPXTIN2073 - Adapter Cap with Steel Wire



SPXTA2237-06 - Removable Adapter for Positioning Winch



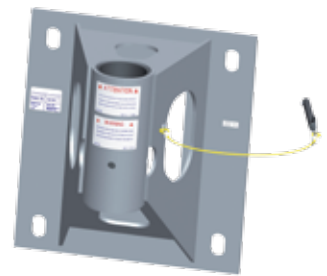
SPXTIN2021 - Barrel Adapter (stainless steel)
SPXTIN2129 - (zinc)



SPXTIN2253 - Mural Adapter for 102mm Mast



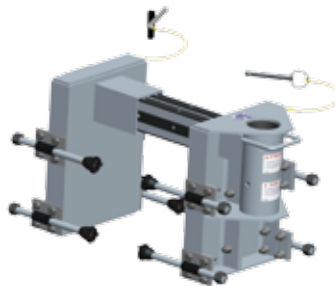
SPXTIN2085 - H-Beam Adapter



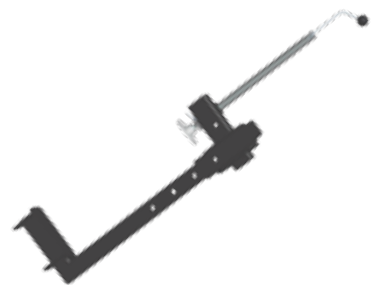
SPXTIN2124 - 203mm Clearance Mural Adapter (stainless steel)
SPXTIN2067 - (zinc)



SPXTIN2207 - Zinc Plated Adapter Cap
SPXTIN2206 - Adapter Cap with Steel Wire



SPXTIN2125 - 635-1140 Adapter



SPXTIN2126-14 - C Clamp Adapter for Trailer Hitch Mount

SPANSET XTIRPA CONFINED SPACE FALL ARREST AND RESCUE SYSTEMS

Features and Benefits

Portable Manhole Guard Davit System

Tow Bar Hitch Davit Systems

H-Base Davit System

Fixed Davits

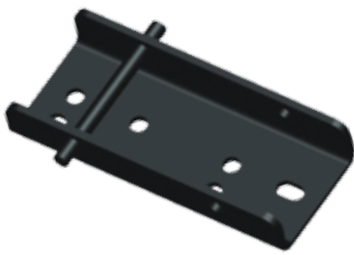
Counterweight System

Accessories

Access and Rescue Equipment



SRL and Winch Adapters



SPXTA2002-22N - Mounting Bracket (comes with davit) also suits the Sala SRL and Winch



SPXTIN2191 - Adapter Bracket for North SRL Bracket (FP6610/15 purchased prior to 2012) and Miller Man Handler



SVLWB-20 - Bracket for 20 Metre Personnel Winch



SVLWB-30 - Bracket for 30 Metre Personnel Winch



SVLRB-HD-15 - 3 Way Recovery Winch Adapter



SVLRB-18 - Fall Arrest and Recovery Block Adapter



IKHRAB - Bracket for IKHRA-30 3 Way Retracting Lifeline



FPRBB - Bracket for FPRB-15 3 Way Retracting Lifeline



SPXTIN2215 - Adapter for North SRL Bracket (FP6610/33) (Note: Purchased prior to 2012)

SPANSET XTIRPA CONFINED SPACE FALL ARREST AND RESCUE SYSTEMS

- Features and Benefits
- Portable Manhole Guard Davit System
- Tow Bar Hitch Davit Systems
- H-Base Davit System
- Fixed Davits
- Counterweight System
- Accessories**
- Access and Rescue Equipment



Pole Hoist System

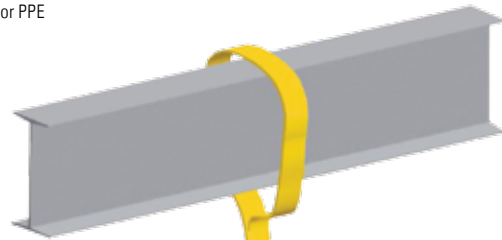
This two piece portable rescue system is one of the most versatile on the market. With the use of a certified anchor point, the rotating head allows you to retrieve someone in a confined space both vertically and horizontally.

The hoist is 2160mm fully extended with the first pin position at 1320mm and additional pin points at 1450mm, 1575mm, 1675mm, 1830mm and 1930mm.

The pole hoist weighs 6kg.

Constructed from yellow security powder-coated aluminium the hoist comes complete with bracket SPXTA2002-22N. An adjustable T-bar leg (SPXTIN2127) is available separately. This pole hoist meets or exceeds CSA, ANSI, OSHA and CSST Standards.

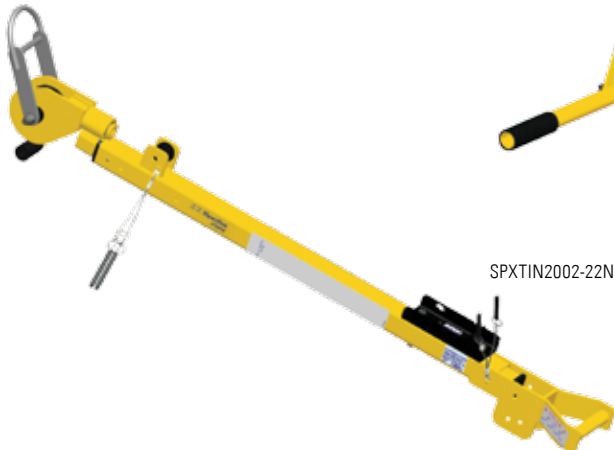
SPXTIN8008 - Pole Hoist System for PPE



SPXTIN2127 - Adjustable T-Bar Leg



SPXTIN2120 - Pole Hoist Swivel Head



SPXTIN2002-22N - Mounting Bracket



SPANSET XTIRPA CONFINED SPACE FALL ARREST AND RESCUE SYSTEMS

Features and Benefits

Portable Manhole Guard Davit System

Tow Bar Hitch Davit Systems

H-Base Davit System

Fixed Davits

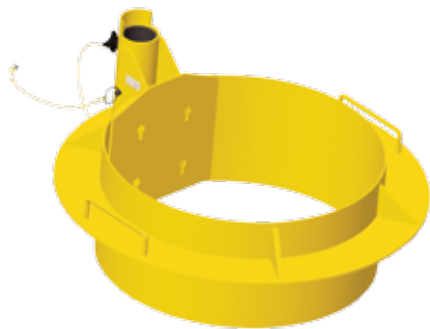
Counterweight System

Accessories

Access and Rescue Equipment

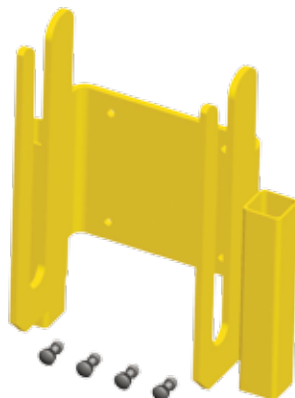


Fall Arrest and Retrieval Manhole Collar Options



Description	Size (mm)	Code
Cone Shaped Safety Ring	760	SPXTIN2089
Cone Shaped Safety Ring	710	SPXTIN2089

Description	Size (mm)	Code
Fall Arrest/Retrieval Manhole Collar	460-500	SPXTIN2219
Fall Arrest/Retrieval Manhole Collar	500-560	SPXTIN2220
Fall Arrest/Retrieval Manhole Collar	560-610	SPXTIN2221
Fall Arrest/Retrieval Manhole Collar	610-660	SPXTIN2217
Fall Arrest/Retrieval Manhole Collar	660-710	SPXTIN2222
Fall Arrest/Retrieval Manhole Collar	710-760	SPXTIN2218
Fall Arrest/Retrieval Manhole Collar	760-810	SPXTIN2169
Fall Arrest/Retrieval Manhole Collar	810-860	SPXTIN2223
Fall Arrest/Retrieval Manhole Collar	860-910	SPXTIN2224
Fall Arrest/Retrieval Manhole Collar	1080-1120	SPXTIN2180



SPXTA2217-05 - Ladder Adapter for Manhole Collar



SPXTIN2010 - Retaining Ring

SPANSET XTIRPA CONFINED SPACE FALL ARREST AND RESCUE SYSTEMS

Features and Benefits

- Portable Manhole Guard Davit System
- Tow Bar Hitch Davit Systems
- H-Base Davit System
- Fixed Davits
- Counterweight System

Accessories

- Access and Rescue Equipment



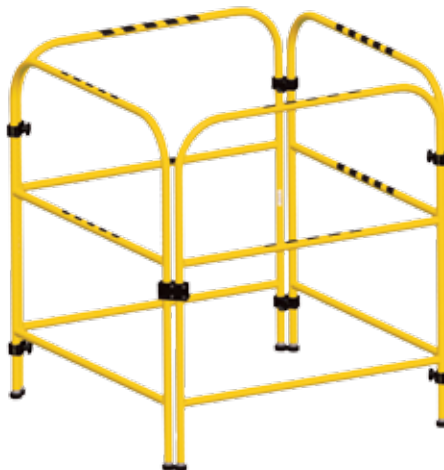
Multi-Functional Barricade

This most innovative 1070mm multi-functional barricade is manufactured from aircraft aluminium for durability and dependability.

Easy to fold, lightweight at only 13kg and easily stored in a vehicle, this unit offers a unique concept which allows the worker to assemble as many sections as needed.

With its removable delrin hinges [SPXTA2101-4], you will be able to create a very effective safe working area for any configuration.

SPXTIN2101 - Multi-functional barricade



SPXTA2101-04 - Multi-function barricade extension



SPXTA2101-04 - Removable Delrin Hinge



SPANSET XTIRPA CONFINED SPACE FALL ARREST AND RESCUE SYSTEMS

Features and Benefits

Portable Manhole Guard Davit System

Tow Bar Hitch Davit Systems

H-Base Davit System

Fixed Davits

Counterweight System

Accessories

Access and Rescue Equipment



Ratchet Action Manhole Cover Lifter

This unique concept was designed for easy handling of manhole covers. Light and durable, this model will offer an ergonomic and safe way of lifting the heaviest lids without strain or injury. The easy ratchet system allows you to always work in an ergonomic position.

Manhole Cover Lifter Characteristics

Weight	6kg
Height	1346mm
Materials	Aluminium and zinc plated steel
Strap	Black nylon
Foot	Non-skidding foot
Mechanism	Automatic rewinding mechanism in stainless steel
Maximum Capacity	1220kgm strap tension



SPXTIN2071 - Manhole Cover Lifter



SPANSET XTIRPA CONFINED SPACE FALL ARREST AND RESCUE SYSTEMS

Features and Benefits

- Portable Manhole Guard Davit System
- Tow Bar Hitch Davit Systems
- H-Base Davit System
- Fixed Davits
- Counterweight System

Accessories

- Access and Rescue Equipment



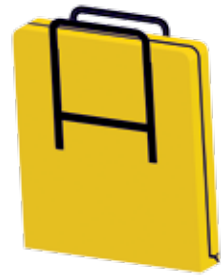
Carry Bags and Trolley



SPXTP2001-050 - Carry Bag for 865mm Manhole Guard



SPXTP2108-025 - Carry Bag for 1067mm Manhole Guard



SPXTP2101-008 - Carry Bag for Multi-Functional Barricade



SPXTP2002-046 - Carry Bag for Davit Arm



SPXTP2118-017 - Carry Bag for H-Base Davit System [Body]



SPXTP2120-014 - Carry Bag for Pole Hoist



SPP2118-018 - Carry Bag for H-Base Davit System [Foot]



SPP2121-003 - Carry Bag for Pole Hoist



SPXTP2003-011 - Carry Bag for Davit Mast



SPXTIN2031 - Carry Bag for Davit Arm and SRL



SPXTIN2232 - Trolley for Xtirpa System

SPANSET XTIRPA CONFINED SPACE FALL ARREST AND RESCUE SYSTEMS

Features and Benefits

Portable Manhole Guard Davit System

Tow Bar Hitch Davit Systems

H-Base Davit System

Fixed Davits

Counterweight System

Accessories

Access and Rescue Equipment



WaterWorks Premium Corrosion Resistant Range

1100 WaterWorks Premium

Designation: Full body harness

- Stainless steel rear D
- Front fall arrest stainless steel D
- Stainless steel buckles
- Confined space loops on shoulders
- Fully adjustable padded leg straps and shoulder/back straps
- Easy-flow sweat absorbing mesh and foam composite padding
- Fitted with suspension trauma relief straps

Suitable for: Fall arrest, confined space entry, roof work, ladder systems, elevated work platforms, maintenance, construction in corrosive environments etc

Code: 1100WW Premium



1107 WaterWorks Premium

Designation: Full body harness

- Stainless steel rear D
- Front fall arrest stainless steel D
- Stainless steel side pole strap Ds
- Stainless steel buckles
- Confined space loops on shoulders
- Fully adjustable padded leg straps and shoulder/back straps
- Easy-flow sweat absorbing mesh and foam composite padding
- Fitted with suspension trauma relief straps

Suitable for: Fall arrest, confined space entry, roof work, ladder systems, elevated work platforms, maintenance, construction in corrosive environments etc

Code: 1107WW Premium



SPANSET XTIRPA CONFINED SPACE FALL ARREST AND RESCUE SYSTEMS

Features and Benefits
Portable Manhole Guard Davit System
Tow Bar Hitch Davit Systems
H-Base Davit System
Fixed Davits
Counterweight System
Accessories

Access and Rescue Equipment



WaterWorks Premium Corrosion Resistant Range

1100 WaterWorks

Designation: Full body harness

- Stainless steel rear D
- Front fall arrest stainless steel D
- Stainless steel buckles
- Confined space loops on shoulders
- Fully adjustable padded leg straps and shoulder/back straps
- Fitted with suspension trauma relief straps

Suitable for: Fall arrest, confined space entry, roof work, ladder systems, elevated work platforms, maintenance, construction in corrosive environments etc

Code: 1100WW



1300 WaterWorks

Designation: Full body harness

- Stainless steel rear D
- Front fall arrest stainless steel D
- Side pole strap stainless steel Ds
- Stainless steel buckles
- Confined space loops on shoulders
- Fully adjustable padded leg straps and shoulder/back straps
- Fitted with suspension trauma relief straps

Suitable for: Fall arrest, confined space entry, roof work, ladder systems, pole work, elevated work platforms, maintenance, construction in corrosive environments etc

Code: 1300WW



SPANSET XTIRPA CONFINED SPACE FALL ARREST AND RESCUE SYSTEMS

Features and Benefits

Portable Manhole Guard Davit System

Tow Bar Hitch Davit Systems

H-Base Davit System

Fixed Davits

Counterweight System

Accessories

Access and Rescue Equipment



WaterWorks Premium Corrosion Resistant Range

1800 WaterWorks

Designation: Full body suspension harness

- Rear fall arrest stainless D
- Front fall arrest and abseil stainless Ds
- Padded waist band and side pole strap with stainless Ds
- Plastic reinforced gear loops
- Elasticated rear leg droppers
- Fully adjustable leg and shoulder straps
- Stainless shoulder buckles
- Hi-vis webbing

Suitable for: Fall arrest, rescue, rope access, roof work, ladder systems, tower and pole work, maintenance, construction etc

Code: 1800WW



1100 WaterWorks ERGO – Miners

Designation: Full body harness

- Rear fall arrest stainless D
- Front fall arrest stainless D
- Padded waist band with battery and self rescuer straps
- Confined space attachment loops
- Fully adjustable leg and shoulder straps
- Padded shoulder and leg straps
- Hi-vis webbing
- Suspension trauma relief straps

Suitable for: Fall arrest, confined space entry, ladder systems, elevated work platforms, underground mining, maintenance, construction etc

Code: 1100WW ERGO Miners



SPANSET XTIRPA CONFINED SPACE FALL ARREST AND RESCUE SYSTEMS

Features and Benefits
 Portable Manhole Guard Davit System
 Tow Bar Hitch Davit Systems
 H-Base Davit System
 Fixed Davits
 Counterweight System
 Accessories

Access and Rescue Equipment



Confined Space Accessories

Spreader Bar

- For use in tight confined space entry applications
- Enables a worker to be lifted and lowered with a vertical profile which is impossible with a D ring connection
- A wrist restraint is provided to enable further narrowing of the shoulders, especially during a rescue situation
- Stainless steel bar and 44mm webbing construction with two heavy duty snap hooks.

Code: 4006



Saverline 15m 3-Way Retracting Lifeline

This self retracting lifeline offers fall protection when entering or exiting confined spaces, and have the additional feature of an easy to deploy emergency winch function.

- 15 metre galvanised steel lifeline
- Strong, lightweight aluminium casing
- Swivel fall indicator hooks standard
- Weighs 8.9kg
- Maximum load 150kg.

Code: SVLRB-15



Personnel Winch

These robust personnel winches are perfectly suited to the demanding requirements of the confined space environment.

Tough, steel construction, combined with sensible features, allow operators to get on with the task at hand in total confidence.

Attention to detail, such as wire guide rollers and a spring loaded spool retention bar add to the workhorse nature of these winches.

- 20 and 30 metre units available
- Galvanised steel cable
- 20m unit weighs 14kg, 30m 15.5kg
- 20m and 30m maximum workload of 150kg.

Code: SVLWB-20 / SVLWB-30



SPANSET XTIRPA CONFINED SPACE FALL ARREST AND RESCUE SYSTEMS

Features and Benefits

Portable Manhole Guard Davit System

Tow Bar Hitch Davit Systems

H-Base Davit System

Fixed Davits

Counterweight System

Accessories

Access and Rescue Equipment



Heavy Duty Tripod

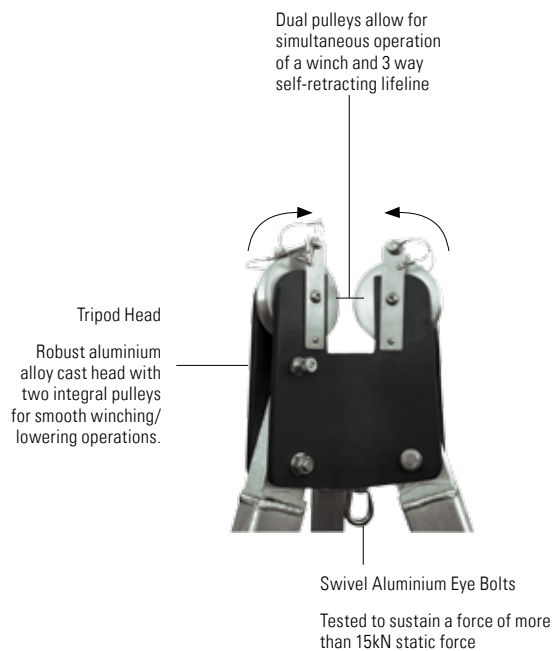
This aluminium tripod has been designed for tough work conditions and long term use and is particularly suitable for the hire industry. Rectangular, fully adjustable legs and a one piece cast head are designed to resist damage. Integrated twin pulleys and an additional auxiliary anchorage point allow many options and combinations of access, egress and rescue equipment to be specified. Standard extended height is 2.7m.

Code: Tripod-HD



Heavy Duty Tripod

Working Load Limit	350kg
Weight	24kg
Standard Height	1.86m
Extended Height	2.7m
No. of Persons	2
Wheelbase (Footprint) Diameter	2.3m
Legs	Aluminium
Head Wheels	Stainless Steel
Hardware	Zinc Plated Steel
Head Finish	Black Powder Coated



SPANSET XTIRPA CONFINED SPACE FALL ARREST AND RESCUE SYSTEMS

Features and Benefits

Portable Manhole Guard Davit System

Tow Bar Hitch Davit Systems

H-Base Davit System

Fixed Davits

Counterweight System

Accessories

Access and Rescue Equipment



4000 Entry and Egress Pulley System

Our pulley system with a 4:1 mechanical advantage is simple to use and features one way pulleys ie: free wheeling to assist the hauling effort when raising, and locked, adding friction and resistance when lowering.

Safety is further enhanced with a locking, spring loaded, toothed cam. It can be self operated or by a second person. The kit comes complete with a fold out rescue organizer bag, anchor sling karabiners and an ascender/rope grab for even greater ergonomics.

Kit Contains

- 4000 rescue pulley system
- 50m of Australian Standards rescue rope
- 2 x K1 karabiners
- 2 x 2000 round sling
- 1 x RF5 ascender
- Lay flat gear organizer bag

CODE: 4000







SpanSet
XTIRPA

DO NOT TOUCH
EMERGENCY
SERVICE
USE ONLY

Head Office

SpanSet Australia Ltd
150 Old Bathurst Road
(PO Box 164)
Emu Plains NSW 2750

Phone: 02 4735 3955
Fax: 02 4735 3630

sales@spanset.com.au
www.spanset.com.au

Queensland Office

Mobile: 0413 737 079

Victoria Office

Mobile: 0413 737 076

South Australia and Northern Territory Office

29 Cormack Road
Wingfield SA 5013

Mobile: 0435 751 557

Western Australia Office

Unit 1-2, 37 Tulloch Way
Canning Vale WA 6155

Phone: 08 9455 7404
Fax: 08 9455 3477

The SpanSet logo is located in the bottom right corner of the page. It features the word "SpanSet" in a bold, dark blue, sans-serif font. A registered trademark symbol (®) is positioned to the upper right of the letter "t".