

Purpose designed for the transport industry, CarFix 50 helps you stay compliant, efficient and safe.



CarFix 50.



Scan the QR code for more information or to order

02-04-2025-055 - CarFix50 Promo Brochure V2

CarFix 50.

Securing vehicles safely and reliably



HEAD OFFICE

150 Old Bathurst,
Emu Plains NSW 2750
02 4735 3955
sales@spanset.com.au

WA OFFICE

1/ 50 Tulloch Way,
Canning Vale WA 6155
08 9455 7404
sales.wa@spanset.com.au

spanset.com.au



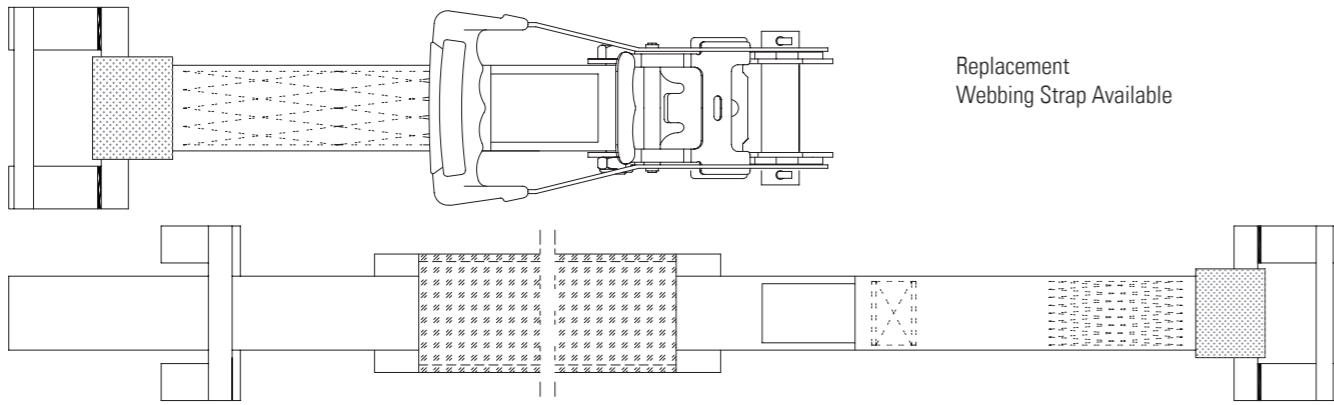
Webbing
Protector
Grip

2500kg

High
Load
Capacity

TFI

Tension
Force
Indicator



Replacement
Webbing Strap Available

TLS-C-0x2.85-03- CarFix50



Designed for Flatbeds,
Trailers and Recovery
Vehicles



3-Point
Anchor System



High Load Capacity
2500kg

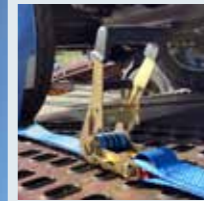


Meets AS/NZS 4380
standards

SpanSet CarFix 50 provides a quick, easy and compliant solution, ensuring certified safety for transporting cars and light commercial vehicles across Australia.

**Stay Compliant.
Stay in Control.
Choose CarFix.**

Whether you're a car transporter, recovery operator, or logistics company, SpanSet CarFix 50 takes the guesswork out of safe vehicle restraint. Backed by decades of expertise in load control and safety systems, it's the smart choice to meet your legal obligations and protect your vehicles and business.



1. Push-up Ratchet

Ergonomic design for high pre-tensioning with ease, for optimal force distribution and often includes self-locking and controlled release allowing for force to be released in small steps.



2. Claw Hook

Attaches to strap end and slides into track plate, allowing flexible positioning for secure and quick attachment. The CarFix 50 uses a 3-point claw hook attachment system.



3. The Controller

Protective sleeve with a ribbed profile that ensures webbing stays on the tyre, preventing damage and maintaining lashing position.



4. Tension Force Indicator (TFI)

Visual indicator in the ratchet; jaws close when the full tension is reached. Open TFI indicates the need to re-tighten, enhancing safety and fast visual checks during a load check stop.



5. 50mm SpanSet Webbing

Made from high-tenacity polyester fibres, for strength, durability, and resistance to UV rays and abrasion. Low stretch under load. 2850mm length.

SpanSet®