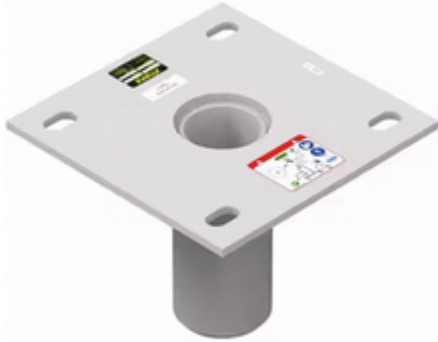


360° Flush floor adapter

Compatible with 610mm Mast and Davit arm for concrete and steel



Item Name short	Load Capacity (kg) [kg]	Compatible Davit arm	Compatible Mast	Length [mm]	Width [mm]	Height [mm]	Main Material
IN-2006	164	XT-IN-2210	XT-IN-2003	305	305	238	Stainless Steel

Item Name short	Packaging Unit (PU) Content	Colour
IN-2006	1	Grey

ORDER NUMBERS[Global Item Number/Local ERP Number SSDE]

IN-2006

2030538

■ Norms	EN 795: 2012 AS/NZS 5532
■ Compatible Davit arm	XT-IN-2210
■ Compatible Mast	XT-IN-2003
■ Main Material	Stainless Steel
■ Colour	Grey
■ Length	305 mm
■ Width	305 mm
■ Height	238 mm
■ Load Capacity (kg)	164 kg
■ Packaging Unit (PU) Content	1

SpanSet GmbH & Co. KG
 Jülicher Straße 49-51
 52531 Übach-Palenberg
 Deutschland
 +49 (0) 2451 4831-0
 info@spanset.de
 www.spanset.com



Subject to technical changes. All rights reserved. No part of this technical data sheet may be reproduced in any form (print, photocopy, microfilm or any other process) or processed, duplicated or distributed using electronic systems without the written authorisation of SpanSet. This technical data sheet has been compiled with due care; SpanSet accepts no liability for errors or omissions. DB040719 © SpanSet GmbH & Co. KG - Germany

**SpanSet
 Certified
 Safety**