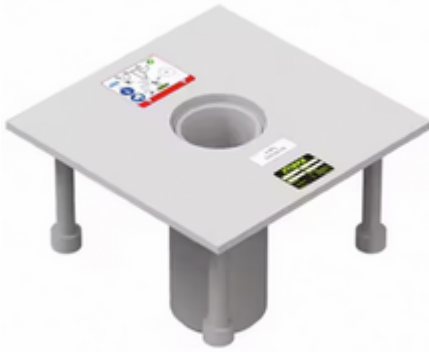


### 360° Fresh concrete floor adapter

Compatible with 610 mm Davit arm when pouring concrete for new construction



Item Name short	Load Capacity (kg) [kg]	Compatible Davit arm	Compatible Mast	Working angle [°]	Length [mm]	Width [mm]	Height [mm]
IN-2007	164	XT-IN-2210	XT-IN-2003	360	305	305	238

Item Name short	Weight Net [kg]	Packaging Unit (PU) Content
IN-2007	10	1

#### ORDER NUMBERS[Global Item Number/Local ERP Number SSDE]

IN-2007

2030539

■ Norms	EN 795: 2012 AS/NZS 5532
■ Compatible Davit arm	XT-IN-2210
■ Compatible Mast	XT-IN-2003
■ Working angle	360 °
■ Length	305 mm
■ Width	305 mm
■ Height	238 mm
■ Load Capacity (kg)	164 kg
■ Weight Net	10 kg
■ Packaging Unit (PU) Content	1

